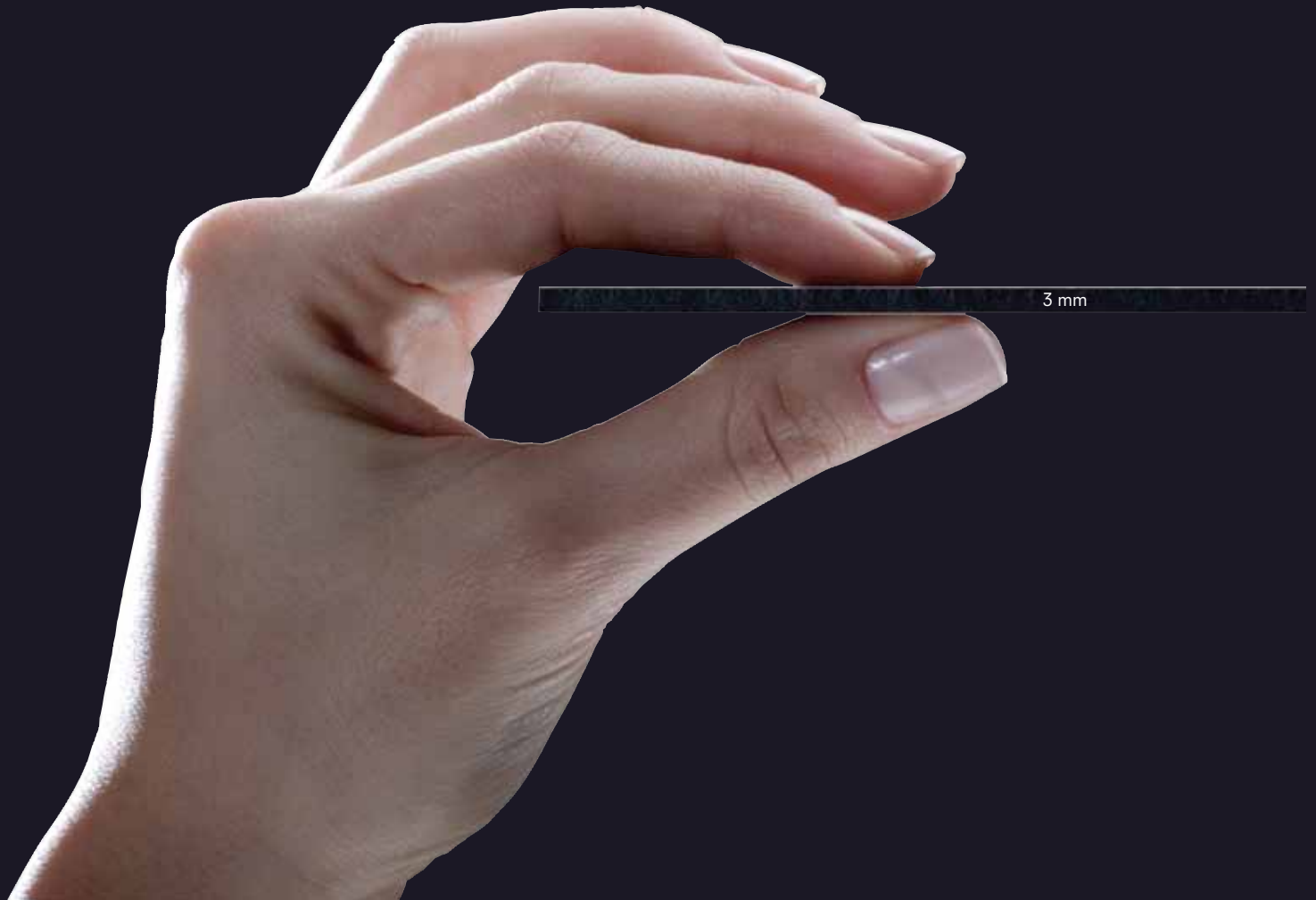




İçindekiler / Index

- 03 Fiziksel Özellikler / Physical Features
- 04 Boyutlar / Dimensions
- 06 Yüzeyler / Surfaces
- 08 Ürün Grupları / Product Groups
- 10 Renkler / Colors
- 13 Koleksiyonlar / Collections
- 29 Teknolojik Yenilikler / Technological Innovations
- 41 Uygulama Alanları / Application Fields
- 73 Uygulama Detayları / Application Details
- 85 Teknik Özellikler / Technical Specifications

BREAKTHROUGH TO CERAMIC SECTOR AND OFFERS A CERAMIC SLAP WITH A THICKNESS OF ONLY 3MM AND WITH DIMENSIONS OF 1000X3000MM. KALESINTERFLEX ADDS A NEW PERSPECTIVE TO ARCHITECTURE AND CONSTRUCTION TECHNOLOGY. IT ALLOWS NEW IDEAS TO BE PUT INTO PRACTICE AND CREATE MODERN LIVING SPACES.



WEIGHT

One Kalesinterflex slab (1000x3000 mm)
≈ 21kg (7kg/m²)

FLEXIBILITY

The flexibility radius of a Kalesinterflex Fit slab with concave dimensions of 1000x3000x3mm is 5,5m.

FIRE RESISTANCE

Kalesinterflex is totally fire resistant and non-flammable (Category 0).

CHEMICAL RESISTANCE

Kalesinterflex is resistant to chemicals (acids and bases) due to its porcelain ceramic structure and glaze layer on its surface.

CUTTING

It can be cut with standard glass, ceramic cutters and computer controlled automatic cutting machines in the required dimensions.

DRILLING

Kalesinterflex can be drilled with glass drills as well as with other known automatic drilling devices.

EASE OF CLEANING

Kalesinterflex has a smooth surface on which dirt does not accumulate. If required it can be cleaned with water and known cleaning agents.

ECO-FRIENDLY

Kalesinterflex, which is produced by an environment friendly technology, has Ecospecifier certificate. Compared to the traditional ceramic production process, its gas and dust emission is 20 times, its CO₂ emission is 1000 times less.

PHOTOCATALYTIC

Kalesinterflex is photocatalytic thanks to its Nano-tech coating surface. Kalesinterflex cleans itself with rain and sunlight.

ANTIBACTERIAL

Protects both outdoor and indoor, even in poorly lit environment. Hygienic; resistant to bacteria, mould and fungus. Antibacterial feature of Kalesinterflex is approved by TÜBİTAK. (The Scientific and Technological Research Council of Turkey)

ANTIGRAFITI

Easy to wipe and clean pollutants like crayon, graffiti, permanent marker, board marker.

Kalesinterflex is the first and only porcelain ceramic slab produced in Turkey with dimensions of 1000x3000mm. It can be cut in any size required by projects.

STANDARD SIZES

100x300cm

100x100cm

50x300cm

50x150cm

50x100cm

50x50cm

20x150cm

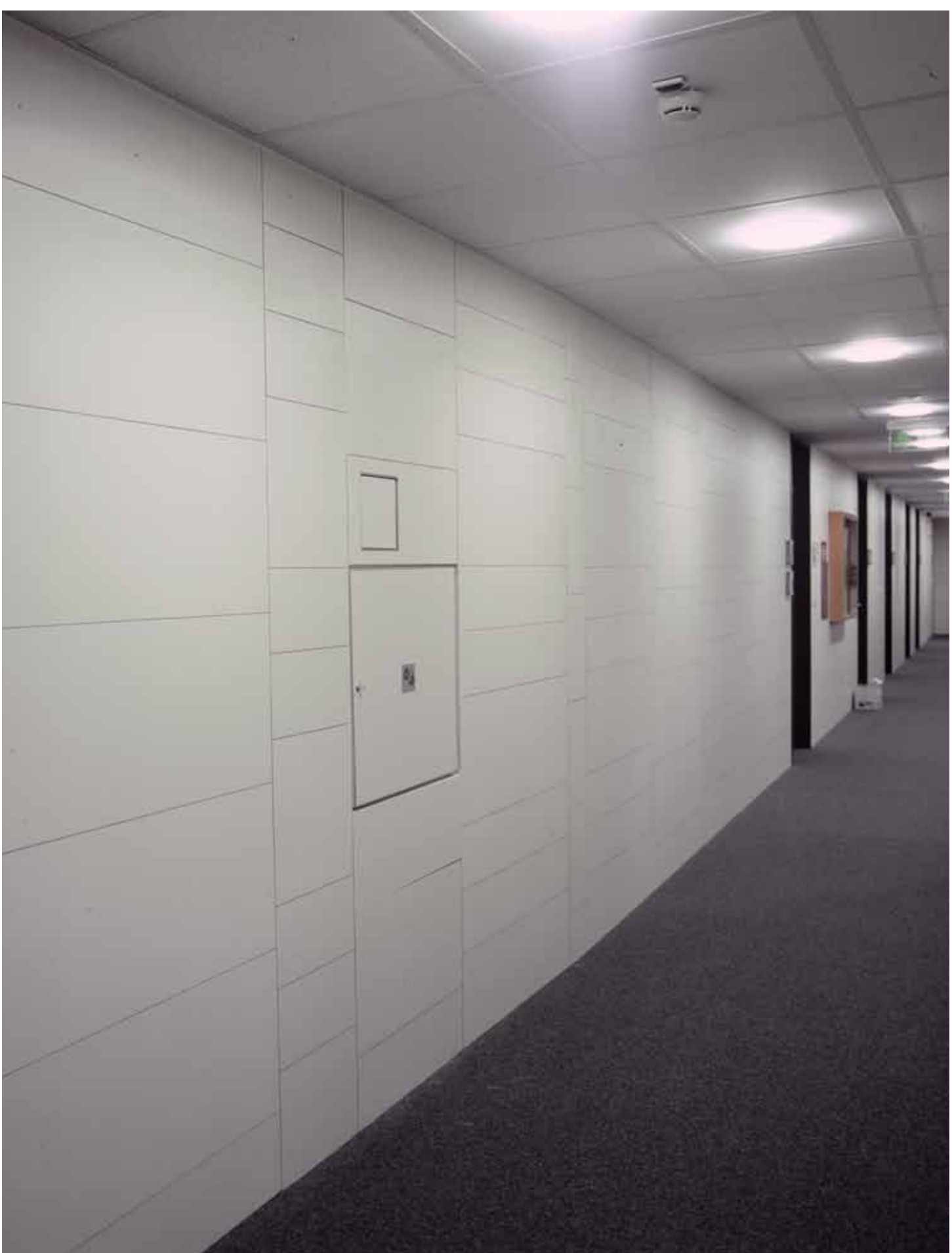
5x100cm

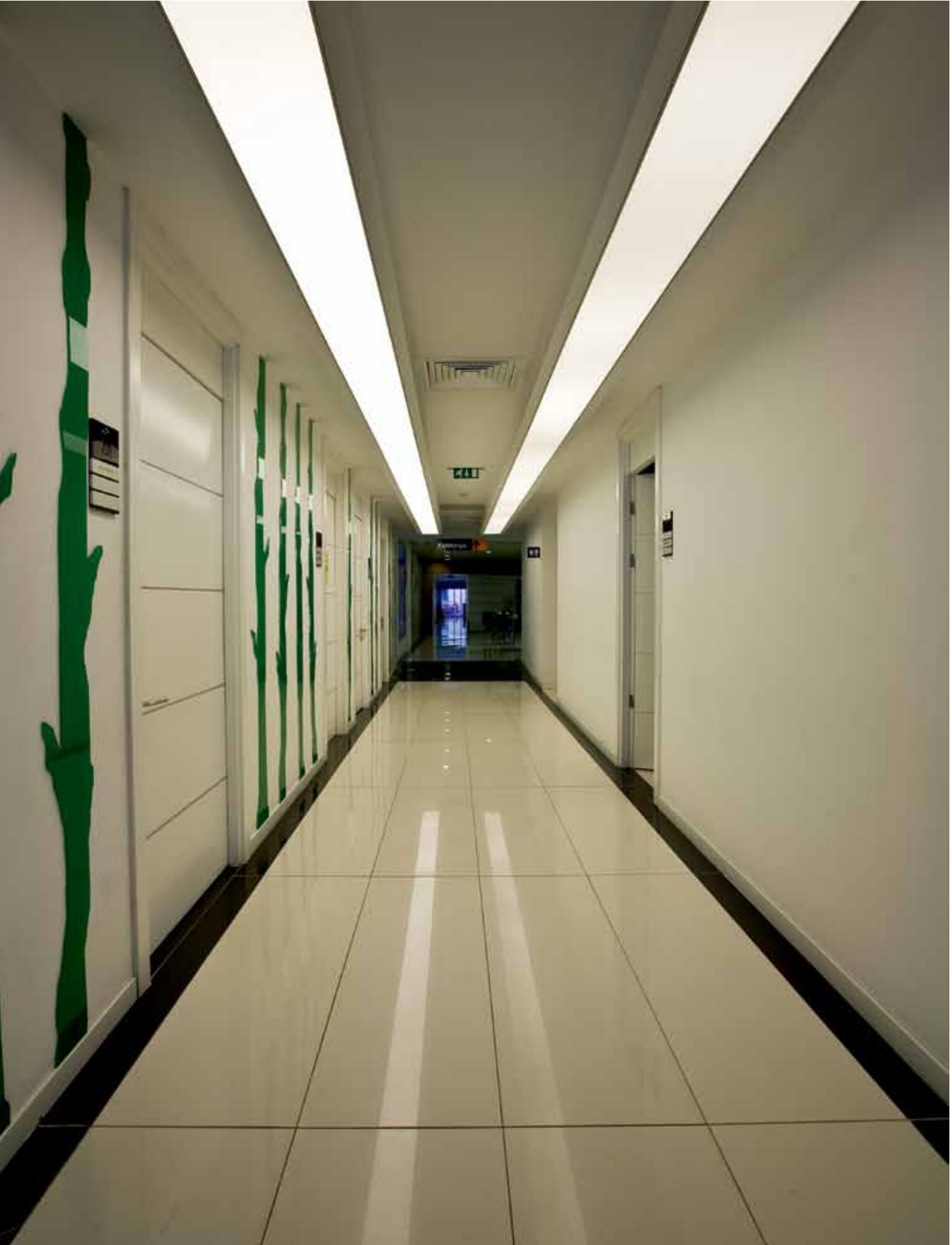
3MM THICKNESS

Kalesinterflex is 3mm thick. This contributes flexibility, light weight and maneuverability.

5MM THICKNESS

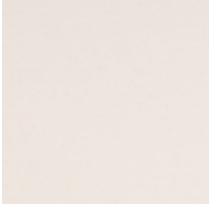
Kalesinterflex is 5mm thick.
Suitable for high traffic areas.





RENKLER / COLORS

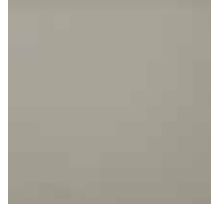
MAT YÜZEY / MATTE SURFACE



Beyaz
White



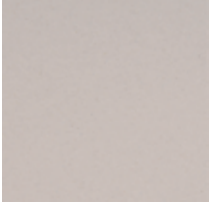
Siyah
Black



Çimento Gri
Cement Grey



Koyu Gri
Dark Grey



Bej
Beige



Bej-gri
Beige-grey



*Kahve
Mocha



Fildişi
Ivory



*Safran
Saffron



*Turuncu
Orange



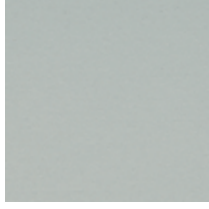
*Kızıl
Coral



*Zeytin Yeşili
Olive Green



*Fıstık Yeşili
Pistachio Green



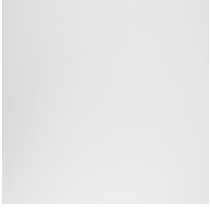
*Çakıl Gri
Pebble Grey



*Turkuaz
Turquoise



*Mavi
Blue



*Mega Beyaz
Mega White



*Mega Siyah
Mega Black

Projelere özel renk çalışmaları, özel koşullar dahilinde yapılmaktadır.

Kalesinterflex, 18 farklı düz renk seçeneği sunmaktadır.

*İşaretili ürünlerin temini için lütfen sipariş vermeden önce bilgi alın.

Project-based color works are performed under special conditions.

Kalesinterflex offers 18 different solid color options.

* Please get information before placing an offer for the procurement of the marked products.



Sablon Spa / Eskişehir — Zemin Uygulama
Sablon Spa / Eskişehir — Floor Application





KOLEKSİYONLAR COLLECTIONS

Büyük fikirler için sınırsız ebatlar. Seramiğin en yenilikçi teknolojisi. 1000x3000mm ebatlarında üretilebilen Kalesinterflex, yalnızca 3mm kalınlığı sayesinde dünyanın en hafif, en ince, en büyük ve en esnek porselen seramiği. Şimdi Kalesinterflex, sağladığı rakipsiz avantajların ötesinde, dekoratif öğeler barındıran konsept serileri aracılığıyla da beklentilerin ötesine geçiyor.

Unlimited dimensions for great inspirations.
The most innovative technology in ceramics.
Kalesinterflex, which can be manufactured in 1000x3000mm dimensions, is the world's lightest, thinnest, largest and most flexible ceramic, thanks to its thickness of only 3mm. And now, in addition to the unparalleled advantages it offers, Kalesinterflex exceeds expectations with its concept series that feature decorative elements.





MARBLES



Limestone
A Plain / Fit (100x300cm)
K Plain / Fit (50x300cm)
B Plain / Fit (100x100cm)
C Plain / Fit (50x150cm)
F Plain / Fit (50x50cm)
G Plain / Fit (50x100cm)



Calacatta
A Plain / Fit (100x300cm)
K Plain / Fit (50x300cm)
B Plain / Fit (100x100cm)
C Plain / Fit (50x150cm)
F Plain / Fit (50x50cm)
G Plain / Fit (50x100cm)



Zebrino
A Plain / Fit (100x300cm)
K Plain / Fit (50x300cm)
B Plain / Fit (100x100cm)
C Plain / Fit (50x150cm)
F Plain / Fit (50x50cm)
G Plain / Fit (50x100cm)



Travertino Classico
A Plain / Fit (100x300cm)
K Plain / Fit (50x300cm)
B Plain / Fit (100x100cm)
C Plain / Fit (50x150cm)
F Plain / Fit (50x50cm)
G Plain / Fit (50x100cm)



Travertino Noce
A Plain / Fit (100x300cm)
K Plain / Fit (50x300cm)
B Plain / Fit (100x100cm)
C Plain / Fit (50x150cm)
F Plain / Fit (50x50cm)
G Plain / Fit (50x100cm)



Crema Marfil
A Plain / Fit (100x300cm)
K Plain / Fit (50x300cm)
B Plain / Fit (100x100cm)
C Plain / Fit (50x150cm)
F Plain / Fit (50x50cm)
G Plain / Fit (50x100cm)



Pulpis

A Plain / Fit (100x300cm)

K Plain / Fit (50x300cm)

B Plain / Fit (100x100cm)

C Plain / Fit (50x150cm)

F Plain / Fit (50x50cm)

G Plain / Fit (50x100cm)



Mocha Perla

A Plain / Fit (100x300cm)

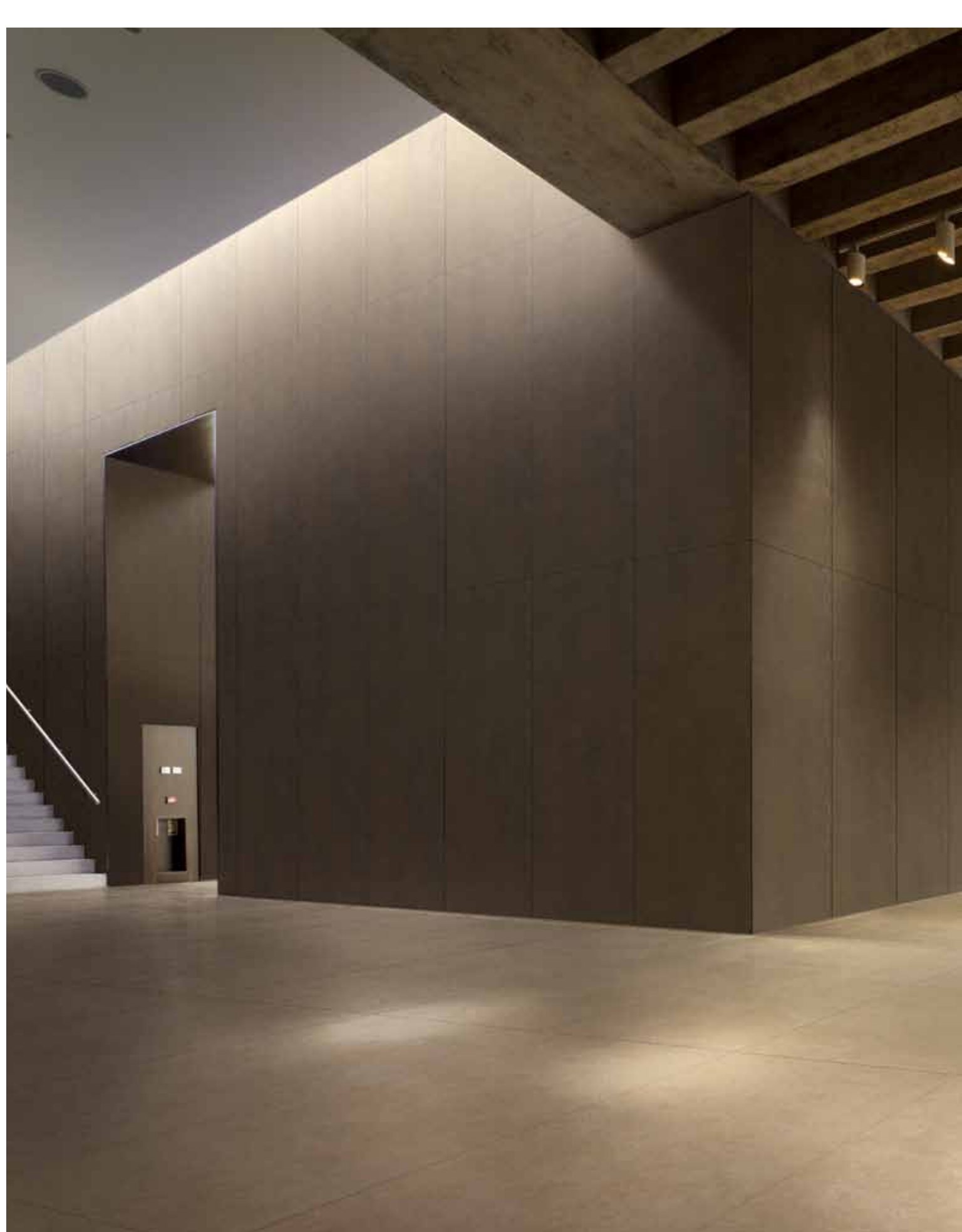
K Plain / Fit (50x300cm)

B Plain / Fit (100x100cm)

C Plain / Fit (50x150cm)

F Plain / Fit (50x50cm)

G Plain / Fit (50x100cm)





C-STONE



Beyaz / White

- A Plain / Fit (100x300cm)
- K Plain / Fit (50x300cm)
- B Plain / Fit (100x100cm)
- C Plain / Fit (50x150cm)
- F Plain / Fit (50x50cm)
- G Plain / Fit (50x100cm)



Bej / Beige

- A Plain / Fit (100x300cm)
- K Plain / Fit (50x300cm)
- B Plain / Fit (100x100cm)
- C Plain / Fit (50x150cm)
- F Plain / Fit (50x50cm)
- G Plain / Fit (50x100cm)



Açık Kahve / Light Brown

- A Plain / Fit (100x300cm)
- K Plain / Fit (50x300cm)
- B Plain / Fit (100x100cm)
- C Plain / Fit (50x150cm)
- F Plain / Fit (50x50cm)
- G Plain / Fit (50x100cm)



Koyu Kahve / Dark Brown

- A Plain / Fit (100x300cm)
- K Plain / Fit (50x300cm)
- B Plain / Fit (100x100cm)
- C Plain / Fit (50x150cm)
- F Plain / Fit (50x50cm)
- G Plain / Fit (50x100cm)



Gri / Grey

- A Plain / Fit (100x300cm)
- K Plain / Fit (50x300cm)
- B Plain / Fit (100x100cm)
- C Plain / Fit (50x150cm)
- F Plain / Fit (50x50cm)
- G Plain / Fit (50x100cm)



Antrasit / Anthracite

- A Plain / Fit (100x300cm)
- K Plain / Fit (50x300cm)
- B Plain / Fit (100x100cm)
- C Plain / Fit (50x150cm)
- F Plain / Fit (50x50cm)
- G Plain / Fit (50x100cm)

NATURAL STONE



Brera Creme

A Plain / Fit (100x300cm)
K Plain / Fit (50x300cm)
B Plain / Fit (100x100cm)
C Plain / Fit (50x150cm)
F Plain / Fit (50x50cm)
G Plain / Fit (50x100cm)



Leccese Light Sand

A Plain / Fit (100x300cm)
K Plain / Fit (50x300cm)
B Plain / Fit (100x100cm)
C Plain / Fit (50x150cm)
F Plain / Fit (50x50cm)
G Plain / Fit (50x100cm)



Leccese Dark Sand

A Plain / Fit (100x300cm)
K Plain / Fit (50x300cm)
B Plain / Fit (100x100cm)
C Plain / Fit (50x150cm)
F Plain / Fit (50x50cm)
G Plain / Fit (50x100cm)



Leccese Grey

A Plain / Fit (100x300cm)
K Plain / Fit (50x300cm)
B Plain / Fit (100x100cm)
C Plain / Fit (50x150cm)
F Plain / Fit (50x50cm)
G Plain / Fit (50x100cm)



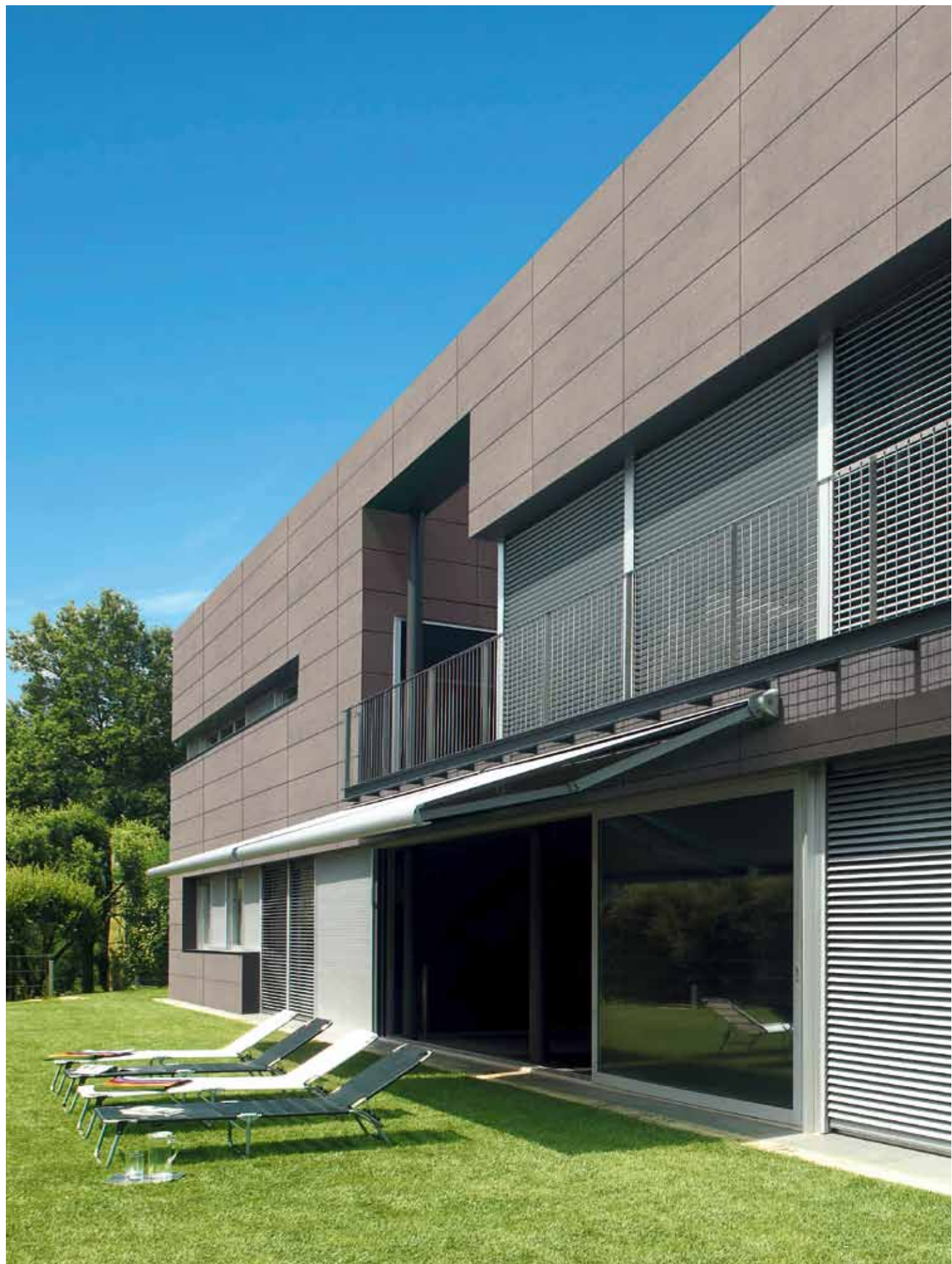
Pietra Grey

A Plain / Fit (100x300cm)
K Plain / Fit (50x300cm)
B Plain / Fit (100x100cm)
C Plain / Fit (50x150cm)
F Plain / Fit (50x50cm)
G Plain / Fit (50x100cm)



Pietra Blue

A Plain / Fit (100x300cm)
K Plain / Fit (50x300cm)
B Plain / Fit (100x100cm)
C Plain / Fit (50x150cm)
F Plain / Fit (50x50cm)
G Plain / Fit (50x100cm)



Natural Stone



FUSTA



Beyaz / White

A Plain / Fit (100x300cm)

K Plain / Fit (50x300cm)

B Plain / Fit (100x100cm)

C Plain / Fit (50x150cm)

F Plain / Fit (50x50cm)

G Plain / Fit (50x100cm)

OXIDO



Buz / Ice

A Plain / Fit (100x300cm)

K Plain / Fit (50x300cm)

B Plain / Fit (100x100cm)

C Plain / Fit (50x150cm)

F Plain / Fit (50x50cm)

G Plain / Fit (50x100cm)



Yosun / Moss

A Plain / Fit (100x300cm)

K Plain / Fit (50x300cm)

B Plain / Fit (100x100cm)

C Plain / Fit (50x150cm)

F Plain / Fit (50x50cm)

G Plain / Fit (50x100cm)



Siyah / Black

A Plain / Fit (100x300cm)

K Plain / Fit (50x300cm)

B Plain / Fit (100x100cm)

C Plain / Fit (50x150cm)

F Plain / Fit (50x50cm)

G Plain / Fit (50x100cm)



Alev / Flame

A Plain / Fit (100x300cm)

K Plain / Fit (50x300cm)

B Plain / Fit (100x100cm)

C Plain / Fit (50x150cm)

F Plain / Fit (50x50cm)

G Plain / Fit (50x100cm)



Petrol / Oil

A Plain / Fit (100x300cm)

K Plain / Fit (50x300cm)

B Plain / Fit (100x100cm)

C Plain / Fit (50x150cm)

F Plain / Fit (50x50cm)

G Plain / Fit (50x100cm)

LEGNO



Light

- A Plain / Fit (100x300cm)
- K Plain / Fit (50x300cm)
- B Plain / Fit (100x100cm)
- C Plain / Fit (50x150cm)
- F Plain / Fit (50x50cm)
- G Plain / Fit (50x100cm)
- D Plain / Fit (20x150cm)



Medium

- A Plain / Fit (100x300cm)
- K Plain / Fit (50x300cm)
- B Plain / Fit (100x100cm)
- C Plain / Fit (50x150cm)
- F Plain / Fit (50x50cm)
- G Plain / Fit (50x100cm)
- D Plain / Fit (20x150cm)



Dark

- A Plain / Fit (100x300cm)
- K Plain / Fit (50x300cm)
- B Plain / Fit (100x100cm)
- C Plain / Fit (50x150cm)
- F Plain / Fit (50x50cm)
- G Plain / Fit (50x100cm)
- D Plain / Fit (20x150cm)



Grey

- A Plain / Fit (100x300cm)
- K Plain / Fit (50x300cm)
- B Plain / Fit (100x100cm)
- C Plain / Fit (50x150cm)
- F Plain / Fit (50x50cm)
- G Plain / Fit (50x100cm)
- D Plain / Fit (20x150cm)



Mocha

- A Plain / Fit (100x300cm)
- K Plain / Fit (50x300cm)
- B Plain / Fit (100x100cm)
- C Plain / Fit (50x150cm)
- F Plain / Fit (50x50cm)
- G Plain / Fit (50x100cm)
- D Plain / Fit (20x150cm)

LUXURY CEMENT



Fildişi / Ivory

A Plain / Fit (100x300cm)
K Plain / Fit (50x300cm)
B Plain / Fit (100x100cm)
C Plain / Fit (50x150cm)
F Plain / Fit (50x50cm)
G Plain / Fit (50x100cm)



Kum / Sand

A Plain / Fit (100x300cm)
K Plain / Fit (50x300cm)
B Plain / Fit (100x100cm)
C Plain / Fit (50x150cm)
F Plain / Fit (50x50cm)
G Plain / Fit (50x100cm)



Bej / Beige

A Plain / Fit (100x300cm)
K Plain / Fit (50x300cm)
B Plain / Fit (100x100cm)
C Plain / Fit (50x150cm)
F Plain / Fit (50x50cm)
G Plain / Fit (50x100cm)



Vizon / Mink

A Plain / Fit (100x300cm)
K Plain / Fit (50x300cm)
B Plain / Fit (100x100cm)
C Plain / Fit (50x150cm)
F Plain / Fit (50x50cm)
G Plain / Fit (50x100cm)



Gri / Grey

A Plain / Fit (100x300cm)
K Plain / Fit (50x300cm)
B Plain / Fit (100x100cm)
C Plain / Fit (50x150cm)
F Plain / Fit (50x50cm)
G Plain / Fit (50x100cm)



Antrasit / Antracite

A Plain / Fit (100x300cm)
K Plain / Fit (50x300cm)
B Plain / Fit (100x100cm)
C Plain / Fit (50x150cm)
F Plain / Fit (50x50cm)
G Plain / Fit (50x100cm)

LUXURY WOOD



Krem / Cream

A Plain / Fit (100x300cm)

K Plain / Fit (50x300cm)

B Plain / Fit (100x100cm)

C Plain / Fit (50x150cm)

F Plain / Fit (50x50cm)

G Plain / Fit (50x100cm)

D Plain / Fit (20x150cm)



Bej - Gri / Beige - Grey

A Plain / Fit (100x300cm)

K Plain / Fit (50x300cm)

B Plain / Fit (100x100cm)

C Plain / Fit (50x150cm)

F Plain / Fit (50x50cm)

G Plain / Fit (50x100cm)

D Plain / Fit (20x150cm)



Moka / Mocha

A Plain / Fit (100x300cm)

K Plain / Fit (50x300cm)

B Plain / Fit (100x100cm)

C Plain / Fit (50x150cm)

F Plain / Fit (50x50cm)

G Plain / Fit (50x100cm)

D Plain / Fit (20x150cm)



Named after the Goddess of Dawn in Roman mythology, the northern lights gather in Kalebodur under the name "Aurora 490". This series was inspired by the northern lights, which can only be observed in close proximity to the poles and seen more clearly at night when the magnetic storms on the Sun reach the Earth. Aurora 490 colored porcelain tiles have been developed for designers who value richness in color for interior and exterior facade coatings and the presence of midtones in the transition from one color to another. Composed of 490 colors, including products with metallic surface effects, the system is compatible with the RAL color chart and offered in 3 and 10 mm thickness and dimensions ranging from 30x60cm to 100x300cm. Furthermore, Aurora 490 has the means to manufacture 1m² of every color in this 490 color range upon request. It is unique in the world thanks to these features.

Aurora 490 “Colored porcelain tiles”

is a color system in which a nanocomposite structure, which is composed of color pigments that are placed between nanometals and nanominerals, is applied on the tile surface via special application methods, thereby obtaining matte and metallic finishes. The materials, which are used in surface coating, are specially developed to be completely harmonious with porcelain tiles.

When the metals and minerals found in nature are reduced to nanometric sizes (smaller than 100 nm), they form very strong bonds with each other and the surface to which they are bonded. Very high amounts of energy and power are required in order to break these bonds, and atoms do not leave the surface for decades because of this color structure's strength. Thus, its endurance is the same as that of a porcelain tile. Furthermore, the special surface morphology that comes with Aurora 490 makes it impossible for dirt, bacteria, or mold to adhere to the surface.

This color system can be applied on the facade and wall coatings of buildings' interior and exterior spaces adhesively or mechanically (with construction) depending on the material's thickness and dimensions. Thanks to its porcelain-based structure, its water absorption is low and it is resistant to frost. It also does not cause problems in applications on exterior facades.

Why Aurora 490?

- It offers 490 color alternatives, including wide color range and midtone transitions that are compatible with RAL Color System.
- It can be used with all mechanical and adhesive facade systems.
- It is possible to place orders in desired amounts and colors from 1m² upwards without limiting the amount.
- Samples and products are procured in a short time in the colors that are selected from the available color chart based on individual projects.
- It is possible to purchase the liveliest colors imaginable as porcelain tiles.
- It is possible to purchase color products, including vivacious colors, at an affordable price.
- It offers new metallic-looking surface alternatives in porcelain tiles.
- It is possible to procure the lightest and darkest products that are difficult and expensive to obtain in porcelain tiles.
- It prevents bacteria, dirt, and mold from getting stuck in and adhering to the surface.
- It makes organic dirt decompose under sunlight or ultraviolet light thanks to its photocatalytic feature.

Thanks to these benefits, Aurora 490 has become the right choice for designers who value color richness for interior-exterior facade coatings and wall coatings, as well as the existence of inter-shades in color transitions—and who request these in smaller amounts.

With Aurora 490, it is possible to make a difference with color on exterior facades and the interior wall spaces of commercial and public buildings, such as shopping malls, sports centers, business centers, office buildings, educational and medical buildings, where there are predominantly large surfaces.

Aurora 490; bünyesinde barındırdığı 490 adet renkten 27 temel rengi hazır olarak renk paletinde bulundurmaktadır.

27 temel renk 3 grupta kategorize edilmiştir.

Birinci grup; Natural Tonlar: Beyazdan siyaha ve bejden kahveye doğru giden doğal tonlar.

İkinci grup; Canlı Renkler: Kırmızı, yeşil, mavi, sarı gibi canlı renk tonları.

Üçüncü grup; Metalik renkler: Yüzeyi doğal ve renkli gruba göre daha ışıltılı ve metalik görünümlüdür.

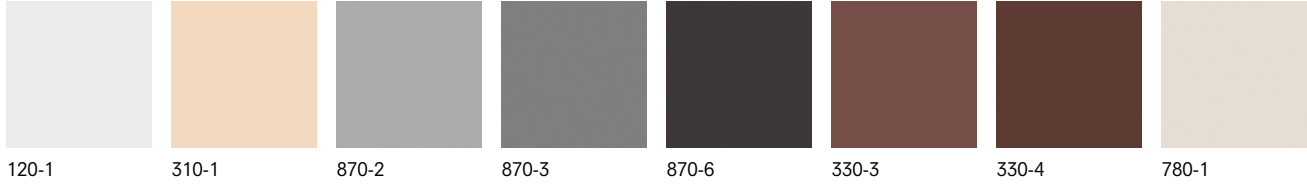
Aurora 490 keeps 27 of the 490 colors on hand in its color palette. These colors can be grouped under three headings.

The first group contains natural shades ranging from white to black and beige to brown.

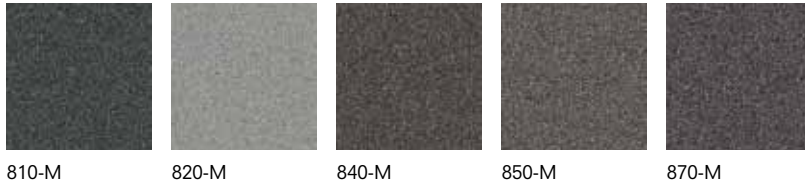
The second group contains lively shades of colors such as red, green, blue and yellow.

The third group is composed of metallic colors; its surfaces are shinier and more metallic-looking than the natural and lively color groups.

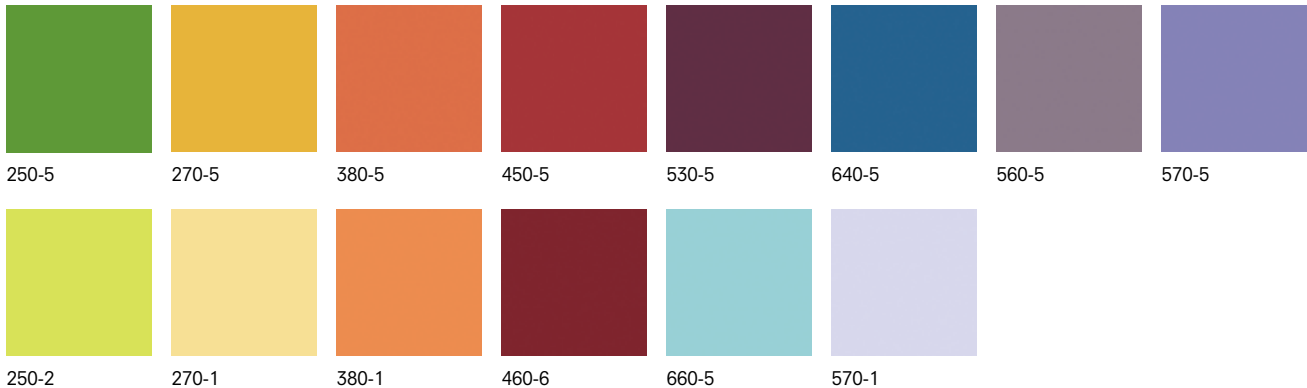
Natural Renkler / Natural Colors

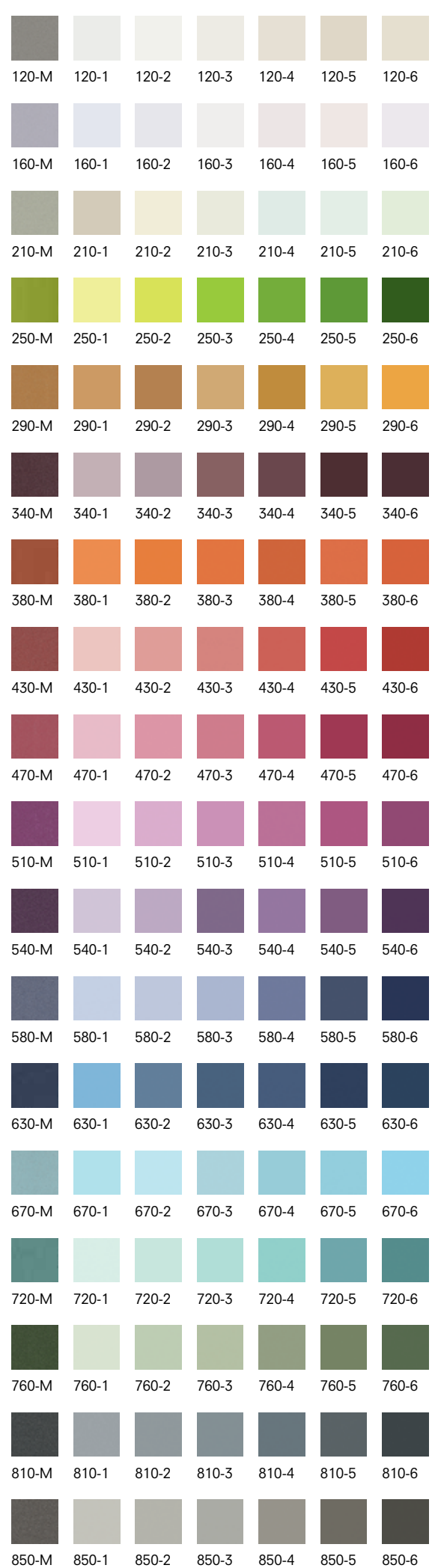
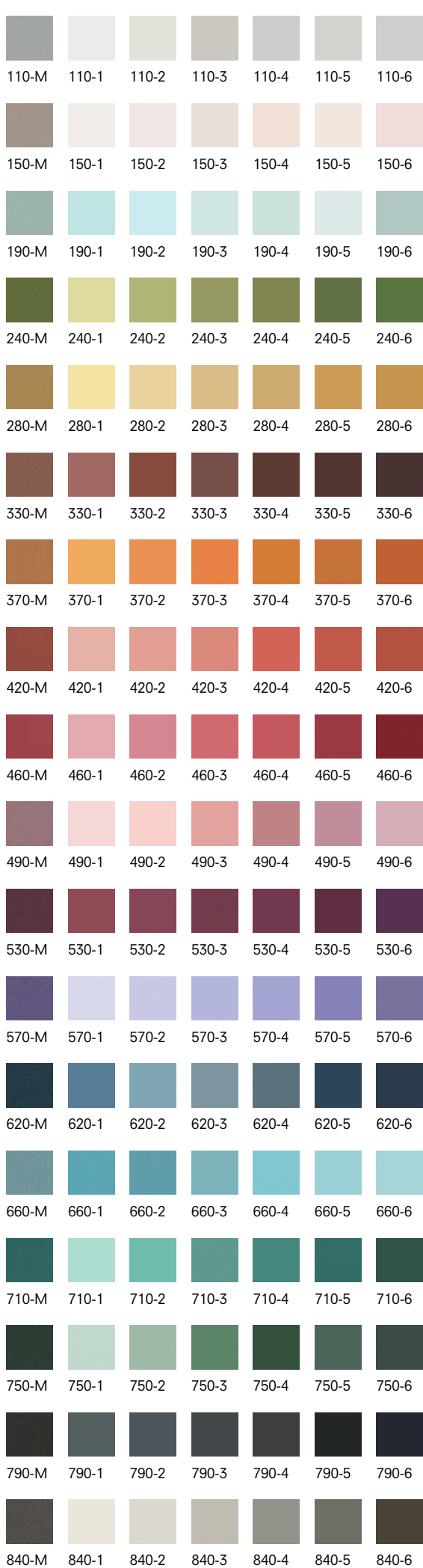


Metalik Renkler / Metallic Colors



Canlı Renkler / Lively Colors







130-M 130-1 130-2 130-3 130-4 130-5 130-6



170-M 170-1 170-2 170-3 170-4 170-5 170-6



220-M 220-1 220-2 220-3 220-4 220-5 220-6



260-M 260-1 260-2 260-3 260-4 260-5 260-6



310-M 310-1 310-2 310-3 310-4 310-5 310-6



350-M 350-1 350-2 350-3 350-4 350-5 350-6



390-M 390-1 390-2 390-3 390-4 390-5 390-6



440-M 440-1 440-2 440-3 440-4 440-5 440-6



140-M 140-1 140-2 140-3 140-4 140-5 140-6



180-M 180-1 180-2 180-3 180-4 180-5 180-6



230-M 230-1 230-2 230-3 230-4 230-5 230-6



270-M 270-1 270-2 270-3 270-4 270-5 270-6



320-M 320-1 320-2 320-3 320-4 320-5 320-6



360-M 360-1 360-2 360-3 360-4 360-5 360-6



410-M 410-1 410-2 410-3 410-4 410-5 410-6



450-M 450-1 450-2 450-3 450-4 450-5 450-6



KOZAÇIPEK



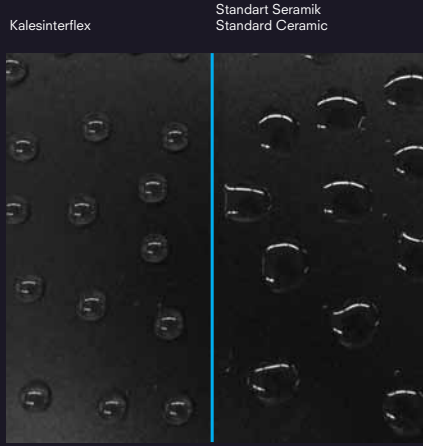
Koza Merkez Binası / Ankara — Gizli Klipsli Sistem
Koza Central Building / Ankara — Hidden Clips Fitted Facade System
Mimar : Promer Mimarlık — Architect : Promer Architectural Office



Su İtici, Yağ İtici ve Anti-graffiti

Water-repellent, Oil-repellent and Anti-graffiti

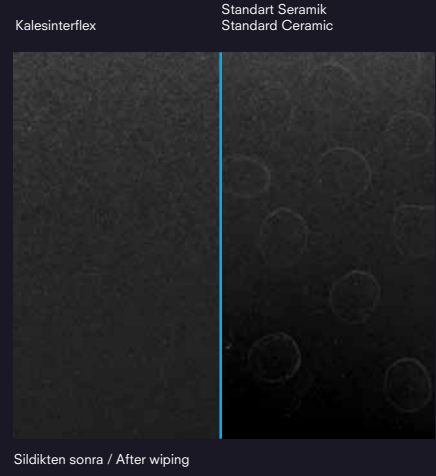
- Temizlik için daha az zaman ve efor.
- Less time and effort to clean up.



Kolay Temizlenir / İç Mekan

Easy Clean / Indoor

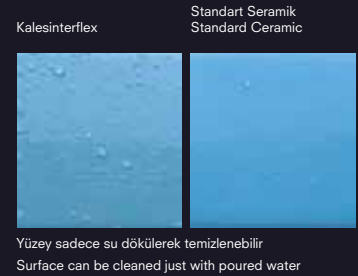
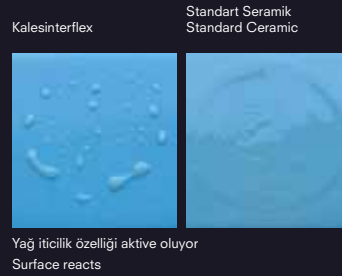
- Daha az deterjan tüketimi.
- Less consumption of detergents.



Su, yiyecekler, içecekler ve bakterilerin yol açtığı lekelerle karşı dayanıklı.

Stain-resistant against water marks, food, beverages and bacteria.

- Hijyenik banyolar ve mutfaklar.
- Kolay silinen yemek lekeleri.
- Hygienic bathrooms and kitchens.
- Easy to wipe food stains.



Anti-grafiti / Anti-graffiti

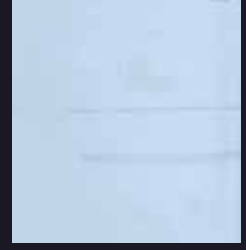
- Boya kalemi, grafiti, keçeli kalem, tahta kalemi lekelerini kolayca siler ve temizler.
- Easy to wipe and clean pollutants like crayon, graffiti, permanent marker, board marker

Kalesinterflex



Silmeden Önce / Before wiping

Kalesinterflex



Sildikten sonra / After wiping

Aşınmaya Karşı Dayanıklı / Resistant to Abrasion

Yaşam alanları birçok kez temizlik kimyasallarına ve aşınmaya maruz kaldıktan sonra dahi ilk günkü gibi yepyeni kalır.

- Ev kimyasalları. Temizlik sıvıları (Asidik / Alkalın)
- Beyazlatıcı.
- Su aşınması.

Living spaces will remain brand new like the first day, after numerous exposure to cleaning chemicals and abrasion.

- Household chemicals. Cleaning liquids (Acidic / Alkaline).
- Bleaching agents.
- Water corrosion.

Standart Seramik / Standard Ceramic



Silmeden Önce / Before wiping

Standart Seramik / Standard Ceramic



Sildikten sonra / After wiping

Mikrobiyel Yükleme / Microbial Loading

E-Coli	Başlangıçta / Start	24 saat sonra / After 24 hours
	5,00E+05	<10
	4,30E+05	<10

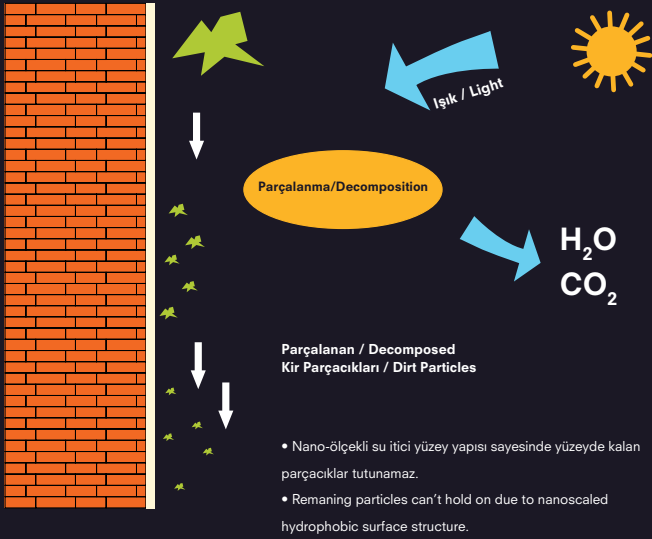
- Bakteri popülasyonu 24 saat içerisinde 10 birimin altına düşer.
- Bacteria population decreases to less than 10 units in 24 hours.

JISZ2801 yöntemine göre.

According to JISZ2801 method.

Kendi Kendini Temizler / Fotokatalitik / Dış Mekan Self Clean / Photocatalytic / Outdoor

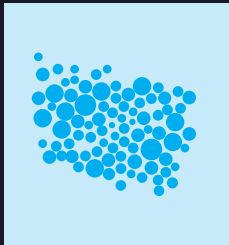
- İls, su lekesi, toz, mantar, küf ve bakterilere karşı dayanıklı.
- Daha az bakım maliyeti.
- Daima temiz ve kuru dış mekan zemini.
- Resistant against soot, water marks, dust, fungus, mould, bacteria.
- Less maintenance cost.
- Always clean&dry outdoor surface.



Antibakteriyel / Anti-bacterial

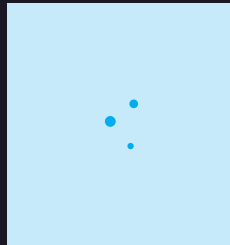
- Yetersiz aydınlatmaya sahip ortamlarda dahi hem iç mekanları hem de dış mekanları bakterilerden korur.
- Hijyeniktir; bakterilere, küfe ve mantara karşı dayanıklıdır.
- Protects both outdoor and indoor, even in poorly lit environment.
- Hygienic; resistant to bacteria, mould and fungus.

Kalesinterflex



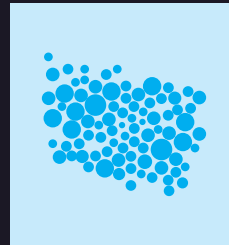
İlk aşama / Initial stage

Kalesinterflex



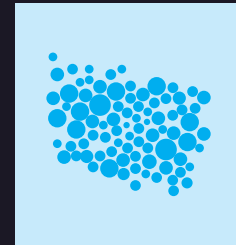
24 saat sonra / After 24 hours

Standart Seramik / Standard Ceramic



İlk aşama / Initial stage

Standart Seramik / Standard Ceramic



24 saat sonra / After 24 hours



UYGULAMA ALANLARI

APPLICATION FIELDS

Kalesinterflex yapı sektöründe kullanım için mükemmel bir malzemedir. Kolaylıkla delinebilir ve istenilen her ebatta kesilebilir. Uygulama kolaylığı, ateşe dayanıklılık ve hafiflik özellikleri sayesinde iç mekan duvar ve zemin sistemleri, dış cephe kaplamaları ve yükseltilmiş zeminler, separasyon panelleri, mobilya uygulamaları, hijyenik alanlar, endüstriyel cephe kaplamaları ve modüler yapılar gibi özel projelerin uygulanmasına elverişlidir.

Kalesinterflex is the perfect material to be used in construction industry. It can easily be rectified, drilled and cut into any desired dimension. The additional outstanding product features of maneuverability, fire resistance and light weight enables projects to be practiced in applications like conventional wall and floor coverings, facade systems and elevated floors, separation panels, furniture applications, hygienic areas, industrial facade system and modular constructions.



İTOB, Menderes / İzmir — Gizli Klipsli Sistem
İTOB, Menderes / İzmir — Hidden Clips Fitted Facade System
Mimar — Architect: Pao Mimarlık



FACADE SYSTEMS

Mekanik Uygulamalar

Gizli Klipsli Sistem

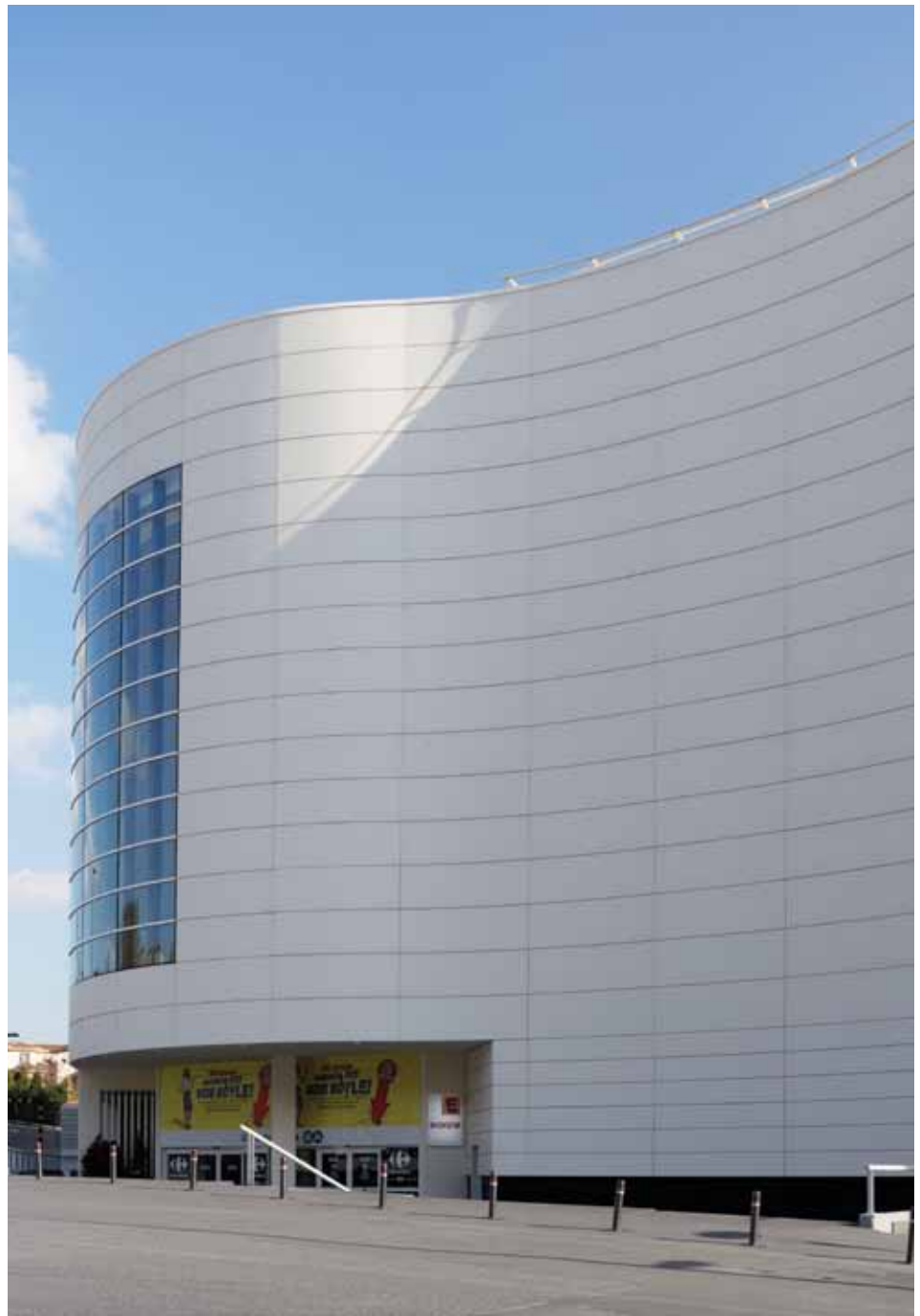
Konstrüksiyon Üzeri Yapıştırma

Mechanical Applications

Hidden Clips System

Fitted with Adhesive on Construction





Carrefour AVM, Bahçelievler / İstanbul — Gizli Klipsli Sistem
Carrefour Shopping Mall, Bahçelievler / İstanbul — Hidden Clips Fitted Facade System



Kayseri Adliye Sarayı / Kayseri — Gizli Klipsli Sistem
Kayseri Courthouse / Kayseri — Hidden Clips Fitted Facade System
Mimar : Ven Mimarlık — Architect : Ven Architects



Çankaya Belediye Başkanlığı , Çankaya / Ankara — Gizli Klips Sistem
Çankaya Municipality, Çankaya / Ankara — Hidden Clips Fitted Facade System



Misia Konutları, Bursa — Gizli Klipsli Sistem
Misia Residence, Bursa — Hidden Clips Fitted Facade System
Mimar — Architect: Emre Arolat Architects





Ramada Plaza / İstanbul — Gizli Klipsli Sistem
Ramada Plaza / İstanbul — Hidden Clips Fitted Facade System
Mimar : M Ofis — Architect : M Office





Kavaçak İş Merkezi / İstanbul — Gizli Klipsli Sistem
Kavaçak Business Center / İstanbul — Hidden Clips Fitted Facade System





Avrupa Konutları Acıbadem Atakent Hastanesi, Halkalı / İstanbul — Gizli Kılıpsız Sistem
European Residences Acıbadem Atakent Hospital, Halkalı / İstanbul — Hidden Clips Fitted Facade System
Mimar : Arta Mimarlık — Architect : Arta Architectural





STA



Lütfi Kırdar Kongre Merkezi, İstanbul — Gizli Klipsli Sistem
Lütfi Kırdar Convention Center, İstanbul — Hidden Clips Fitted Facade System



Anemon Otel / Afyon — Zemin Uygulama
Anemon Hotel / Afyon — Floor Application



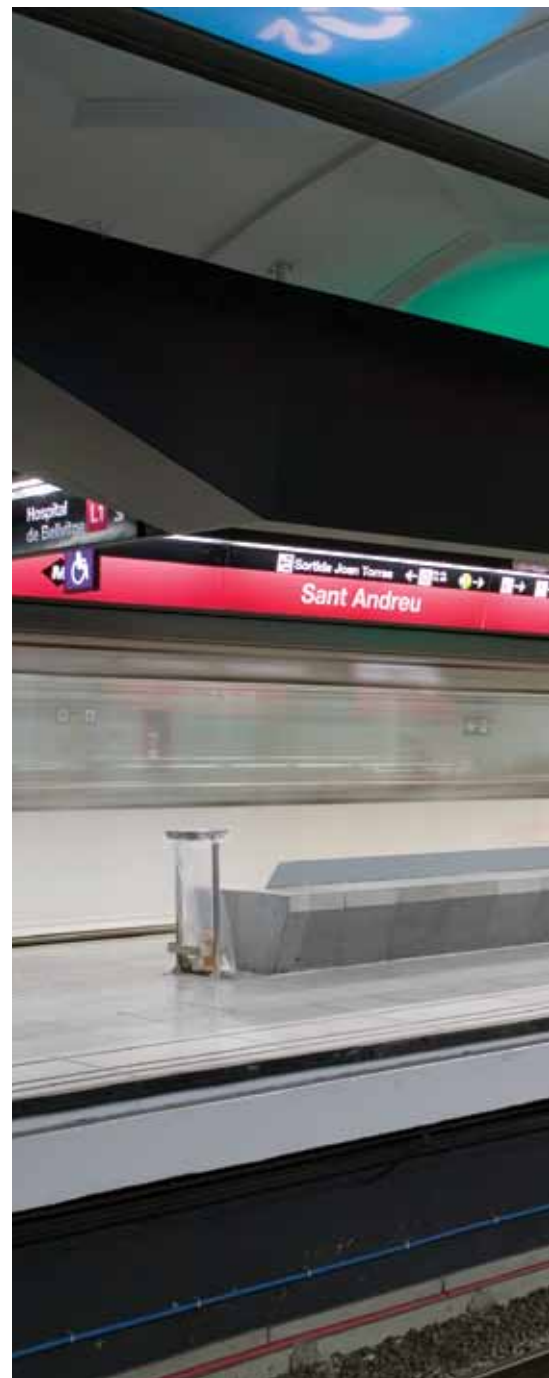
DUVAR VE ZEMİN SİSTEMLERİ WALL AND FLOOR SYSTEMS

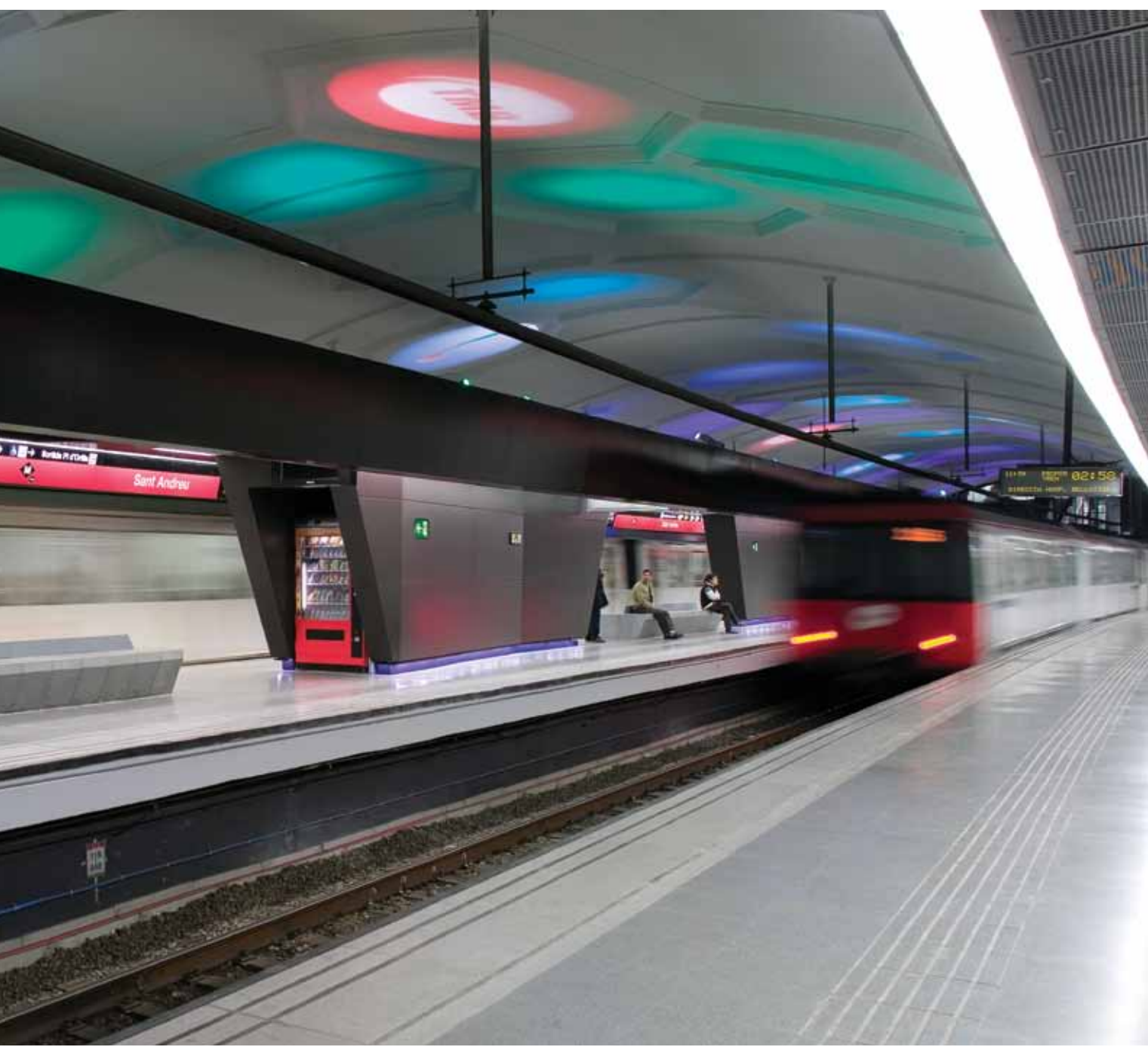
Düz Sıva Üzeri Yapıştırma
Alçı Sıva Üzeri Yapıştırma
Alçıpanel Giydirme Duvar Üzeri Yapıştırma
Alçıpanel Bölme Duvar Üzeri Yapıştırma
Boyalı Yüzeyler Üzeri Yapıştırma
Seramik Kaplı Yüzeyler Üzeri Yapıştırma
Gaz Beton Yüzeyler Üzeri Yapıştırma
Fugalı Sistem (Mekanik)
Zemin Uygulamaları

Adhesion on Plaster
Adhesion on Gypsum
Adhesion on Cladded Gypsum Board
Adhesion on Seperated Gypsum Board
Adhesion on Existing Wall Paint
Adhesion on Existing Tiles
Adhesion on Concrete Blocks
Fuga Fitted System (Mechanical)
Floor Applications



Barcelona Metro İstasyonu / İspanya — Duvar Mekanik Uygulama
Barcelona Metro Station / Spain — Mechanical Wall Application





Sant Andreu

02:58



Haciosman Metro Durađı / İstanbul — Duvar Mekanik Uygulama
Haciosman Metro Station/ İstanbul — Mechanical Wall Application
Mimar : Yüksel Proje — Architect : Yüksel Project

Çıkış
Exit



HACIOSMAN

HT



Darüşşafaka Metro İstasyonu / İstanbul — Eğrisel Mekanik Duvar Uygulama
Darüşşafaka Metro Station / İstanbul — Flexible Mechanic Wall Application





Swiss Otel Grand Efes Otel, İzmir — Duvar Uygulama
Swiss Otel Grand Efes Otel, İzmir — Wall Application
Mimar — Architect: Nida İnşaat / Nida Construction





Fulya Acibadem Hastanesi / İstanbul — Zemin Uygulama
Fulya Acibadem Hospital / İstanbul — Floor Application





Korda Film Stüdyosu, Budapeşte / Macaristan
Korda Film Studio, Budapest / Hungary



Nida İş Merkezi / İstanbul — Duvar Uygulaması
Nida Business Center / İstanbul — Wall Application
Mimar — Architect: MDARCH



Yapı Fuarı, İstanbul / Kalebodur Standı — Tünel Uygulama
Yapı Exhibition, İstanbul / Kalebodur Stand — Tunnel Application

SPECIAL SYSTEM APPLICATIONS

Hijyenik Alanlar
Yükseltilmiş Döşemeler
Separasyon Panelleri
Mobilya Uygulamaları
Endüstriyel Cephe Kaplamaları
Modüler Yapılar

Hygienic Areas
Elevated Floors
Separation Panels
Furniture Applications
Industrial Facade Systems
Modular Constructions





Acibadem Hastanesi, Ataşehir / İstanbul
Acibadem Hospital , Ataşehir / İstanbul



Ege Üniversitesi Ziraat Fakültesi, İzmir
Ege University Faculty of Agriculture, İzmir



Acibadem Hastanesi, Ataşehir / İstanbul
Acibadem Hospital, Ataşehir / İstanbul



Pars McCann, İstanbul — Mobilya (Masa) Uygulaması
Pars McCann, İstanbul — Furniture (Table) Application

APPLICATION AREAS

— The facade of high buildings.

APPLICATION METHOD

— Drawing architectural facade project to obtain suitable tile application.

— Preparing vertical aluminium subconstruction at approximately 10-15cm from the facade according to the architectural project.

— Fixing the loadbearing aluminium clips on T-profiles in the horizontal axis of the project using cross-cylindrical head screws, and fitting EPDM cords into the cord housing on the clips.

— Hanging the Kalesinterflex boards which are sized in accordance with the project and adhered with horizontal aluminium hanger profiles to backsides by polyurethane-based adhesives.

HEAT INSULATION

— Applying heat insulation by using XPS or rockwool between surface of the building and the porcelain tile, if needed.

PORCELAIN TILE DIMENSIONS FOR HIDDEN CLIPS FITTED FACADE SYSTEM

— Matte Fit 3mm / Fit 5mm: 100x300, 50x300, 100x150, 100x100, 50x150, 50x100cm

WEIGHT OF THE SYSTEM

— Tile weight (7 - 12 kg/m²)

— Construction weight (4 - 6 kg/m²)



System Components:

Kalesinterflex Composite Facade Board

Composite facade board (KalesinterflexFit) composed with porcelain ceramic front face, 1000x3000x3mm/5mm in dimensions, with back face laminated with fiber mesh and special epoxy resin or polyurethane and hanger profiles of special cross section at upper and lower parts horizontally which are fixed using a polyurethane based adhesive.

Front Layer	Porcelain board of 1000x3000x3mm (5mm) Fit or of smaller size
Back Layer	Fiber mesh
Adhesive	Special epoxy resin / polyurethane
Upper Hanger Profile	16x30.5mm special cross section 6063 alloy anodized aluminum profile
Lower Hanger Profile	16x48mm special cross section 6063 alloy anodized aluminum profile

Bearing Construction

L anchorages, vertical bearer T profiles, horizontal bearer hanger profiles and fittings constitute the sub-construction of the system.

Anchorage	L 50x70x4mm l = 80-150mm. 6063 alloy raw aluminum anchorage
Vertical bearer profile	50x70x2mm, 6063 alloy anodized aluminum T profile
Bearer Clips	50x56mm special cross section 6063 alloy raw aluminum
Wick	EPDM wick

Fittings

Wall - anchorage connection = 10x100 dowel + rod of appropriate type

Anchorage - vertical bearer T profile connection = Bolt, nut, washer

Vertical - horizontal fuga profile connection = Tapping screw 4.8x16mm

Application

— According to survey made at the jobsite, Kalesinterflex slab layout design is drawn based on standard details.

— Anchorages are fixed on the face according to the design prepared as above.

— Vertical bearer aluminum T profiles are fixed on anchorages with bolts and nuts at a distance of approximately 8 to 15cm to the face plane.

— Horizontal bearer aluminum profiles are fixed with screws on vertical bearer T profiles at horizontal axes defined in the design and EPDM wick is applied in wick seat on the profiles.

— Kalesinterflex slabs prepared to size as defined in the design and fixed with aluminum hanger profiles on back faces with aluminum clips are fixed on T profiles. (Vertical joints must be 3 to 6mm.)

System Components for Mounting Version

Kalesinterflex Composite Façade Panels: Composite façade panels visible surfaces of which are made of porcelain ceramic of 1000x3000x3mm / 5mm and lower dimensions, back surfaces of which are fibre mesh, laminated with special epoxy resin, or polyurethane and fixed at the bottom and at the top (and in the middle if required) horizontally, with special cross section carrier mounting profiles, using polyurethane adhesives.

Front Layer	1000x3000x3mm/5mm porcelain plates and sub dimensions (1000x3000, 500x3000, 500x1500mm and other special dimensions)
Back Layer	Fibre-glass film layer
Adhesive	Special epoxy resin / polyurethane
Mounting Profile Top	16x48mm special cross section 6063 alloy eloxal aluminium profile
Mounting Profile Bottom	16x30.5mm special cross section 6063 alloy eloxal aluminium profile
Mounting Profile Middle	16x30.5mm special cross section 6063 alloy eloxal aluminium profile

Carrier Construction

L anchorages, vertical T profiles and horizontal carrier mounting profiles and connection components system lower construction.

Anchorage	L 50x70x4mm l = 80–150mm 6063 alloy raw aluminium anchorage,
Vertical Carrier Profile	50x70mm, 6063 alloy raw aluminium T profile
Carrier Clips	30x56mm special cross section 6063 alloy raw aluminium clips
Wedge	EPDM wedge

Connection Components

Wall – anchorage connection = proper type of 10x100 dowel + rod

Anchorage – vertical carrier

T profile connection = M8 nut, bolt, washer

Vertical – carrier clips connection = YSB 4.8x16mm screw

Application

— Based on the measured drawings to be prepared from the site, the Kalesinterflex panel layout drawings are prepared as per the standard details (provided as an appendix to the specifications).

— Anchorages are fastened on the façade plane as per the drawings which have been prepared.

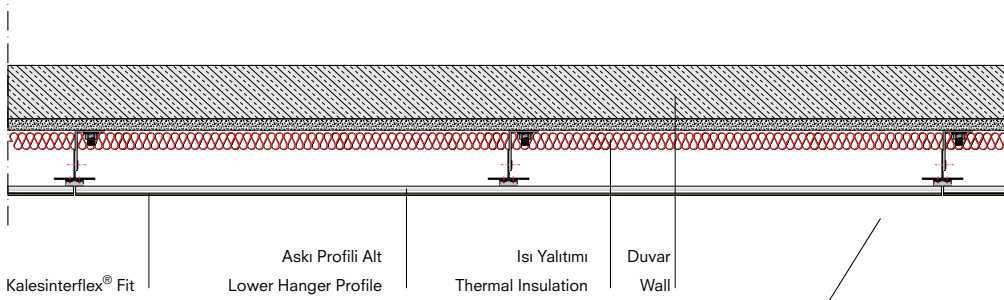
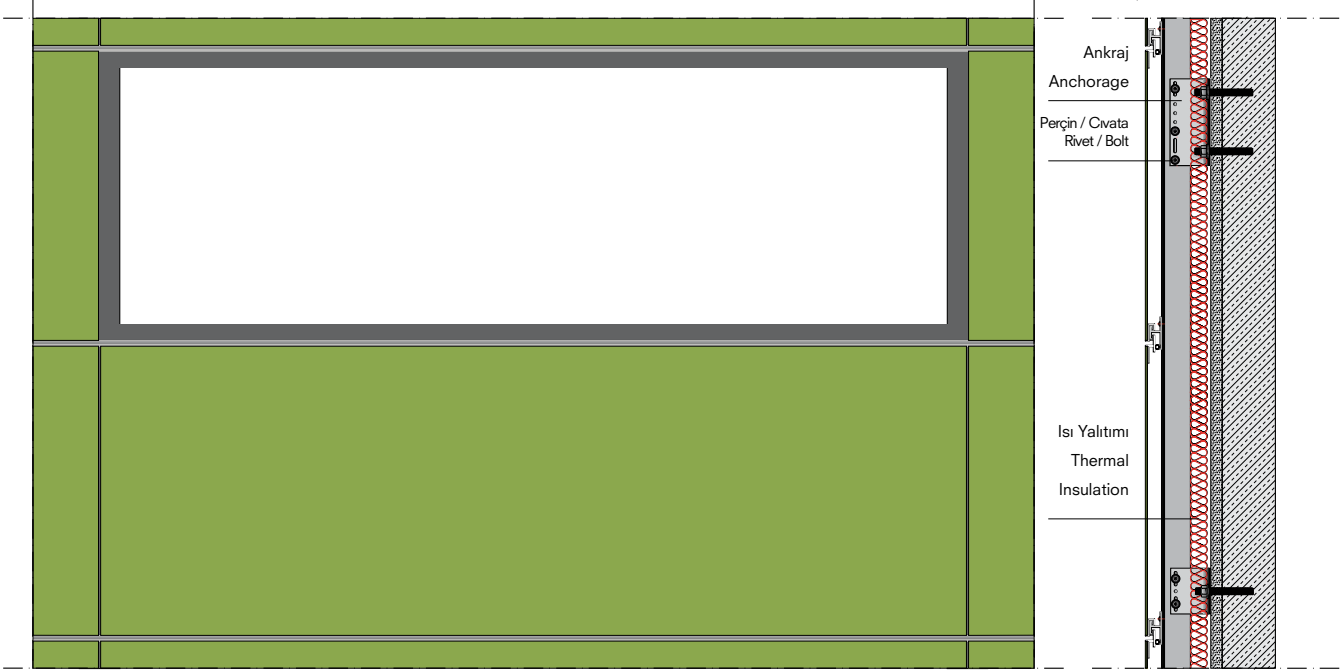
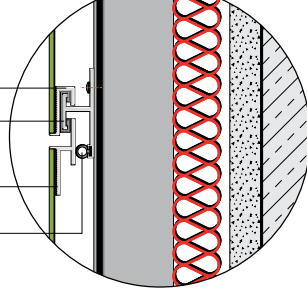
— Vertical carrier aluminium T profiles are fixed on the anchorages at approximately 8 to 15cm in front of the façade plane, with nuts and bolts.

— Aluminium horizontal mounting profiles are glued using polyurethane based adhesives on the back side of the Kalesinterflex plates dimensioned as per the designs, in such a way that the maximum distance from axis to axis is 50cm. As for the axis diameters exceeding 50cm, panel is formed by adding an adequate number of middle mounting profiles, alongside the horizontal length.

— The Kalesinterflex panels prepared are fixed on T profiles using aluminium clips with wedges.

(Horizontal joints must be 3 to 6mm.)

Askı Profili Alt
Lower Hanger Profile
Taşıyıcı Klips / Bearer Clips
Askı Profili Üst
Upper Hanger Profile
EPDM Fıtili
EPDM Wick

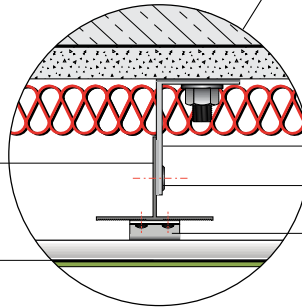


PLAN

KESİT
SECTION

— Ölçek: 1/10
— Scale: 1/10

Alüminyum T Profili
Aluminum T Profile
Poliüretan Yapıştırıcı
Polyurethane Adhesive



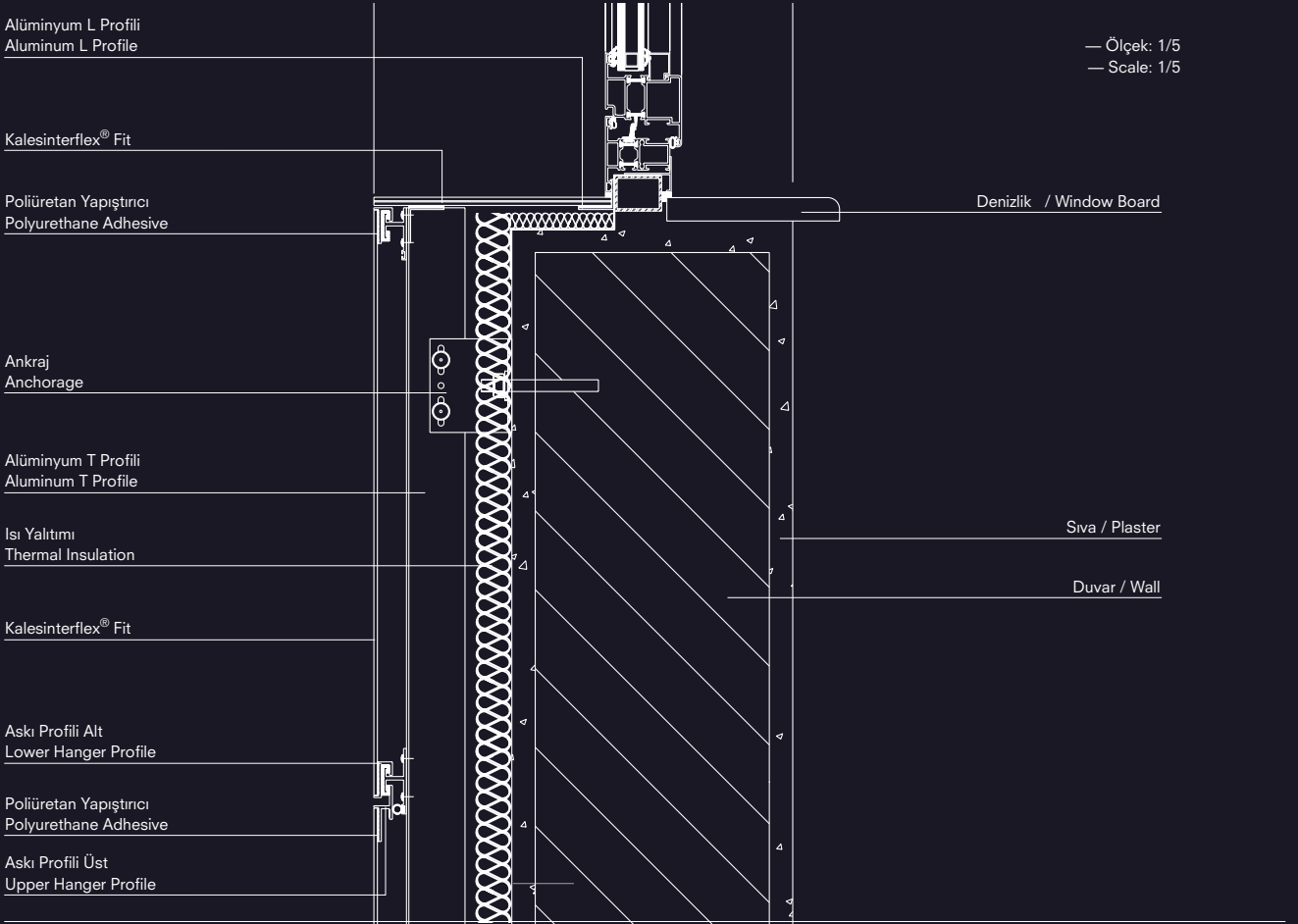
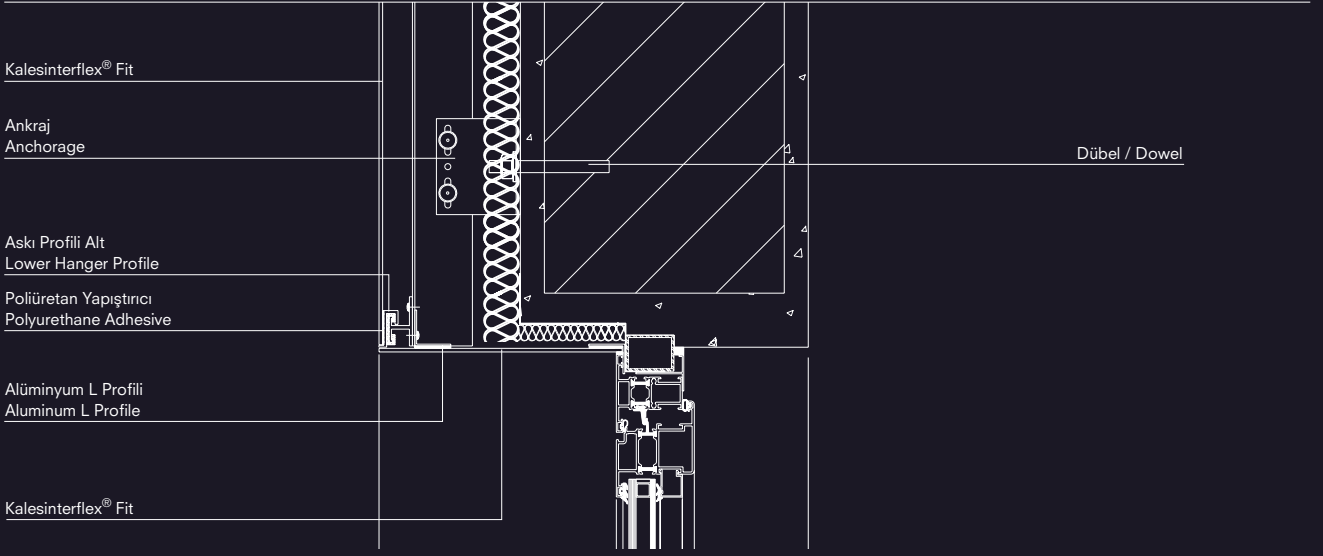
Ankraj
Anchorage
Perçin / Cıvata
Rivet/Bolt
Taşıyıcı Klips
Bearer Clips

* Verilen değerler yaklaşık değerlerdir. Her projede kullanılacak ölçüler cephe veya statik proje firması tarafından yapılacak cephe statik hesapları ile belirlenecektir

* The given values are approximate. All measurements of bearing construction will be determined by the facade or static project firm with regards to the facade static calculations..

Sistem Detayları

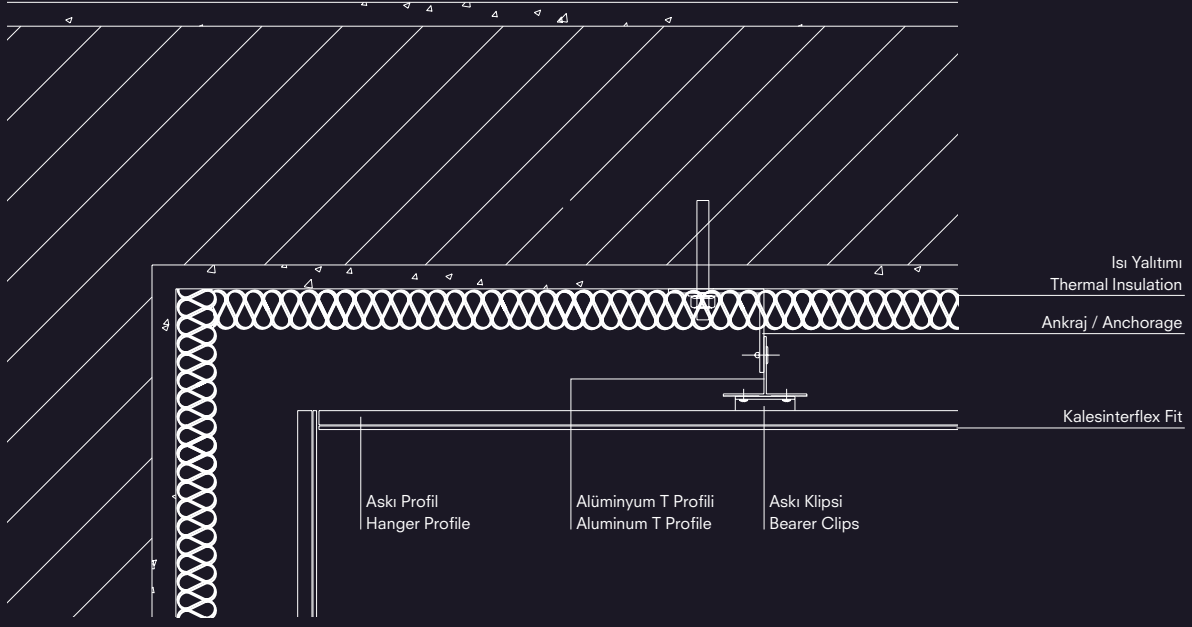
System Details



* Verilen değerler yaklaşık değerlerdir. Her projede kullanılacak ölçüler cephe veya statik proje firması tarafından yapılacak cephe statik hesapları ile belirlenecektir.

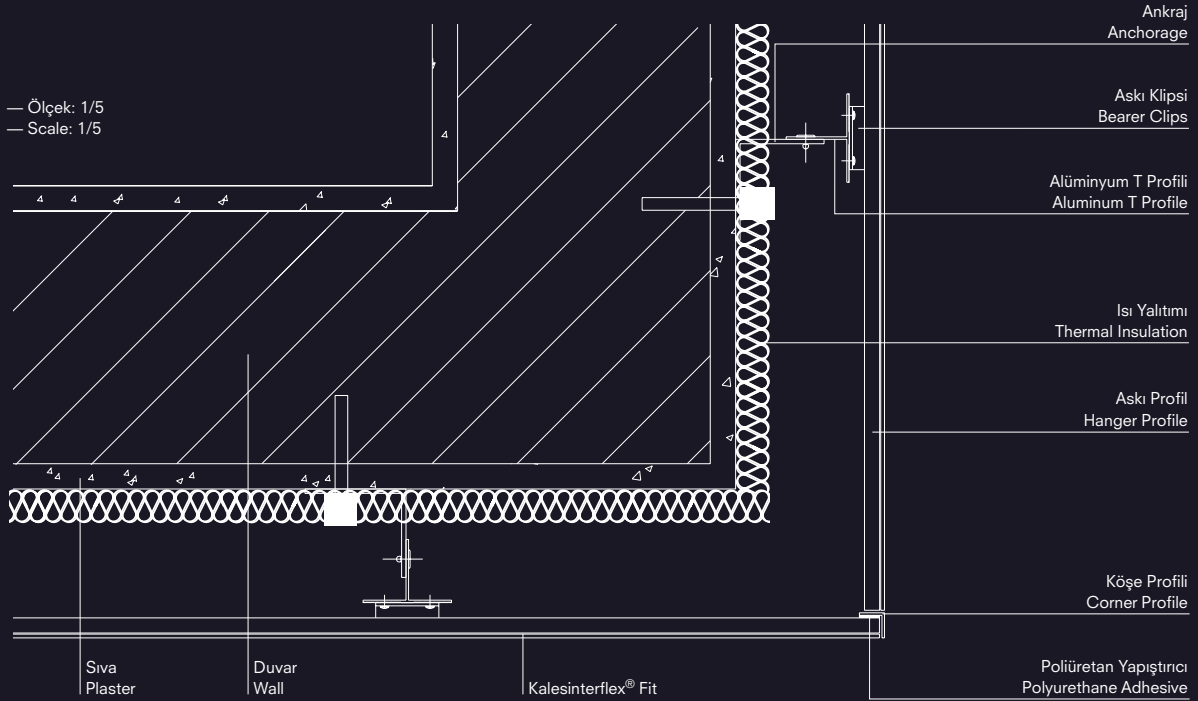
* The given values are approximate. All measurements of bearing construction will be determined by the facade or static project firm with regards to the facade static calculations.

İç Köşe - Dış Köşe Sistem Detayı Internal Corner System Detail



— Ölçek: 1/5
— Scale: 1/5

Dış Köşe Sistem Detayı External Corner System Detail

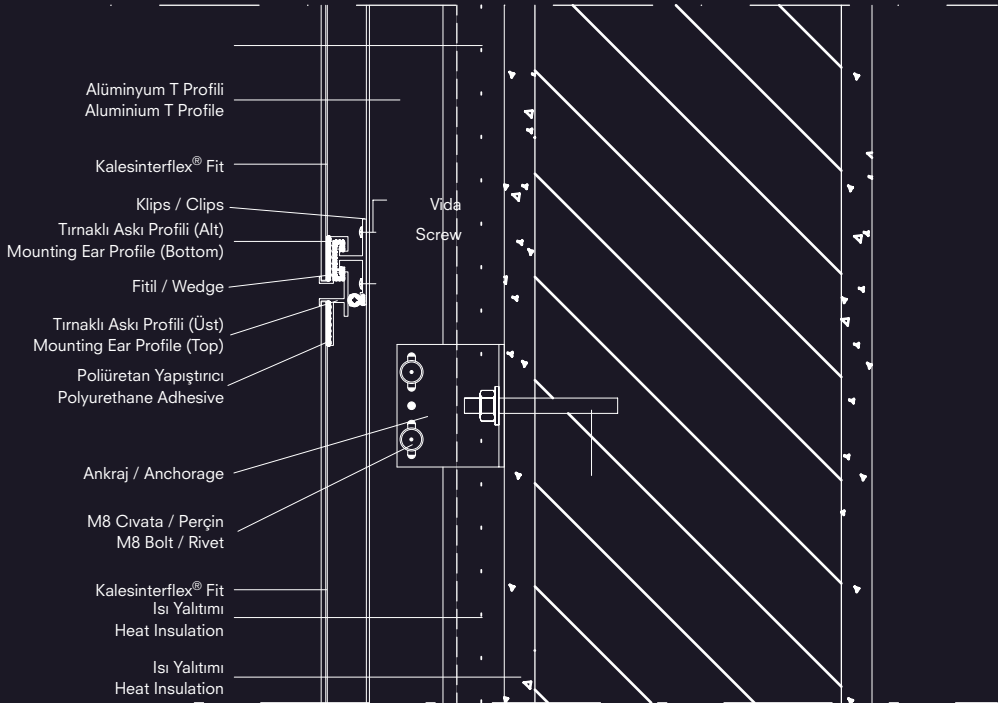
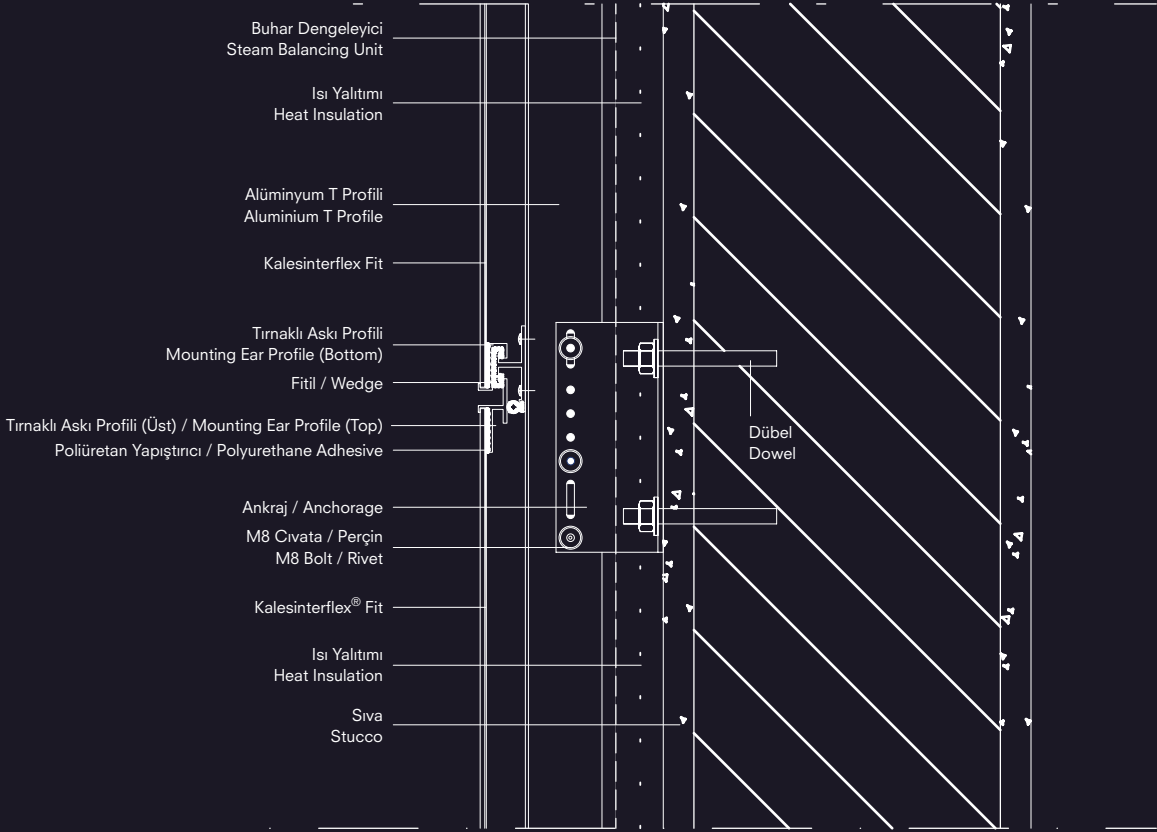


— Ölçek: 1/5
— Scale: 1/5

* Verilen değerler yaklaşık değerlerdir. Her projede kullanılacak ölçüler cephe veya statik proje firması tarafından yapılacak cephe statik hesapları ile belirlenecektir.

* The given values are approximate. All measurements of bearing construction will be determined by the facade or static project firm with regards to the facade static calculations.

Tırnaklı Versiyon Mounting Version

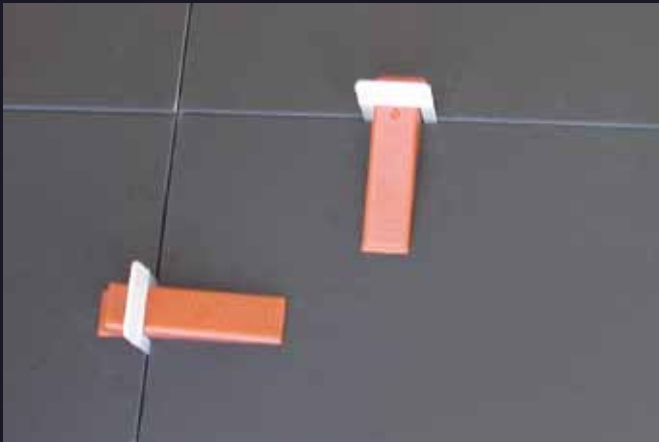
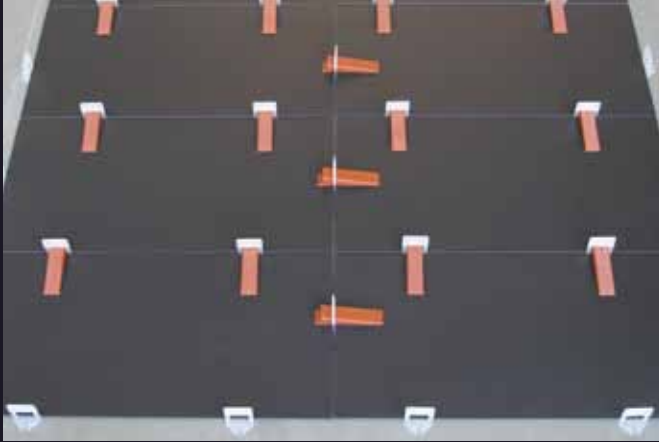


KALESINTERFLEX Zemin ve Duvar Uygulamalarında yenilikçi seramik uygulama aparatlarını öneriyor...

Bu sistem, seramik karoların döşenmesinde herkese büyük yardımcı dokunacak yenilikçi bir üründür. Zemin ve duvar uygulamalarında, görünüm olarak pürüzsüz bir döşeme yaratmak için tasarlanmıştır. Sistem, priz malzemesi kurlenirken karoların birbirlerine kenetleyerek adeta tek bir düz plaka meydana getirir. Sistemin birbirine kenetlenen tasarımı, prizinin büzülmesini azaltır ve birçok durumda da bunu tamamen ortadan kaldırır. Ayrıca yamulma olasılığını da en aza indirir. Sistem, daha fazla yapıştırıcı eklemek için ve/veya karoların yerini değiştirmek için karoların yeniden kaldırılması ihtiyacını azaltarak döşeme işlemini büyük ölçüde hızlandırır ve arzu edilen pürüzsüz ayna yüzeyini meydana getirir. Buna ek olarak, sistemin parçalarından birisi olan tapalar defalarca kullanılabilir.

Avantajları:

- Tüm beceri düzeylerinde öğrenilmesi ve kullanılması çok kolaydır.
- Döşeme işlemi iki kat hızlıdır ve pürüzü gerçekten ortadan kaldırır.
- Karoların kuruma esnasında hareket etmesini önler.
- 300mm ve daha büyük karolar için idealdir.
- Döşeme işlemini gerçekleştiren kişilerin yorgunluğunu ve stresini azaltır.
- Pürüzsüz ve düz çok düzgün bir yüzey elde edilmesini sağlar,



KALESINTERFLEX recommends innovative ceramic application apparatuses for floor and wall applications.

This system is an innovative product that will greatly assist almost anyone with the installation of ceramic tiles. It is designed to create virtually lippage-free installation when used on floors or walls. The system interlocks tiles, creating a single flat slab surface while the setting material is curing. The interlocking design of the system reduces, and in most cases eliminates, settling from shrinkage, as well as minimizes the possibility of warping. The system reduces the need to relift tiles to add more mud and/or the process of shimming tiles. This greatly increases the speed of installation, all the while creating that much desired lippage-free mirror surface. In addition, the caps are reusable dozens of times.

Advantages:

- Very easy to learn and use for all skill levels.
- Installation is twice as fast and virtually eliminates lippage.
- Prevents tiles from moving while drying.
- Ideal for tiles 300mm or larger.
- Reduces installer fatigue and stress.
- A lippage-free, level surface drastically reduces the need for grinding.

ÜRÜN / PRODUCT	YANMAZLIK SERTİFİKASI / INCOMBUSTIBILITY CERTIFICATE	
	Zemin / Floor	Konstrüksiyon / Construction
Kalesinterflex® 3 mm FIT 5 mm FIT	Sınıf / Class: A2-S1	Sınıf / Class: A2-S1-Do
Kalesinterflex® 7 mm LAMINEX 11 mm LAMINEX	Sınıfı / Class: B-S1	Sınıfı / Class: B-S1-Do
Kalesinterflex® 5 mm FIT PARLAK / POLISHED	Sınıfı / Class: B-S1	Sınıfı / Class: B-S1-Do

SEMBOLLER | SYMBOLS



Otel
Hotel



İş Merkezi, Ofis
Business Center



Alışveriş Merkezi
Shopping Center



Konut
Residence



Fabrika
Factory, Warehouse



Dış Cephe
Facade



Restoran, Kafe
Restaurant, Cafe



Havuz
Pool



Dış Mekan
Outside



Hastane
Hospital

TEKNİK ÖZELLİKLER | TECHNICAL CHARACTERISTICS



Yüzey Kalitesi
Surface Quality



Gönyeden Sapma
Rectangularity



Kenar Düzgünlüğü
Edge Flatness



Yüzey Düzgünlüğü
Surface Flatness



Dona Dayanıklılık
Frost Resistance



Aşınmaya Dayanıklılık
Abrasion Resistance



Sürtünme Aşınması
Friction of Abrasion



Su Emme
Water Absorption



Sırlı Karolarda
Çatlama Dayanıklılık
Crazing Resistance in
Glazed Tiles



Isı Genleşme
Katsayısı
Linear Thermal
Expansion Coefficient



Ev Temizlik
Malzemelerine
Dayanıklılık
Resistance to
Household Chemicals



Sırlı Karolarda
Lekelenmeye
Dayanıklılık
Resistance to
Stains in Glazed Tiles



Ebat Toleransı
Deviations From
Dimensions



Eğilme Dayanımı
Bending Resistance



Isı Şokuna
Dayanıklılık
Resistance to
Thermal Shock



Asit ve Alkaliye
Dayanıklılık
Resistance to
Acids & Chemicals



Yanmazlık
Incombustibility



Çevre Dostudur
Environmental Friendly



Ecospecifier
Yeşil Ürün Sertifikası /
Ecospecifier
Green Product Certificate

Teknik Özellikler Kalesinterflex®

Ebatlar (mm)	1000 x 3000 x 3
Ağırlık (kg/m ²)	7
Esneklik Yarıçapı (m) (3mm Fit üründe 3m uzunluk için)	5.5 (iç bükey)
EN 14411 ANNEXE G GROUP B la ile uyumlu sınıflandırma	

	İstenilen	Kalesinterflex® Değeri	Test Standardı
Boyut ve Yüzey Kalitesi			
Uzunluk & Genişlik - Her bir karo için (2 veya 4 kenar) ortalama ebadın çalışılan ebattan (W) sapma yüzdesi	S>410_+/-%0.6	(+/-)%0.2	ISO 10545-2
Kalınlık - Her bir karo için ortalama kalınlığın çalışılan kalınlıktan sapma yüzdesi	S>410_+/-%5	(+/-)%2	ISO 10545-2
Kenar Düzgünlüğü - Çalışılan ebada göre maksimum sapma yüzdesi	S>410_+/-%0.5	(+/-)%0.2	ISO 10545-2
Gönye Kesimi - Çalışılan ebada göre gönyeden maksimum sapma yüzdesi	S>410_+/-%0.6	(+/-)%0.2	ISO 10545-2
Yüzey Düzlüğü - Düzlükten maksimum sapma yüzdesi; a) Merkez kavisi, çalışılan ebattan diyagonal hesaplanana göre b) Kenar kavisi, mukabil çalışılan ebada göre c) Eğrilik, çalışılan ebattan diyagonal hesaplanana göre	S>410_+/-%0.5	(+/-)%0.2	ISO 10545-2
Yüzey Kalitesi	Karoların en az %95'i belirgin bir alan kaplayan karoların görüntüsünü bozmayacak şekilde defosuz olmalıdır.	Uygun	ISO 10545-2
Su Emme (%)	< %0.5	< %0.1	ISO 10545-3
Eğilme Mukavemeti (N/mm ²)	Minimum 35	Minimum 50	ISO 10545-4*
Derin Aşınma - Sırsız karoların derin aşınma mukavemeti (mm ³)	Maximum 175	< 135	ISO 10545-6
Isı Şokuna Dayanım	Test metodu uygulanabilir	Uygun	ISO 10545-9
Dona Dayanım	İstenmektedir	Uygun	ISO 10545-12
Nem Genleşmesi	Test metodu uygulanabilir	% 0	ISO 10545-10
Lekelenme Dayanımı - Sırsız Karolar	Test metodu uygulanabilir	Min. Sınıf 3	ISO 10545-14
Kimyasal Maddelere Dayanım			
Asit ve Alkalilerin Düşük Konsantrasyonlarına Dayanım - Sırsız Karolar	İstenmektedir	ULA	ISO 10545-13
Asit ve Alkalilerin Yüksek Konsantrasyonlarına Dayanım	Test metodu uygulanabilir	UHA	ISO 10545-13
Temizlik Kimyasalları ve Havuz Tuzlarına Dayanım - Sırsız Karolar	Minimum UB	UA	ISO 10545-13
Meyilde Kayma Dayanımı	İstendiği takdirde		DIN 51130/51097

Diğer Teknik Sınıflandırmalar

Çarpma Dayanımı (kJ/cm) (Plain)	Hasarsız	UNI EN ISO 179: 1998
Kalesinterflex® Elastisite Modülü (N/mm ²) (Plain)	45000	UNI EN ISO 14125: 2000
Güneş Işığına Dayanım	Dayanıklı	DIN 51094
Isı İletkenlik Kat sayısı (W/mK)	1.2	TS 388 / 1977

Technical Features of Kalesinterflex®

Dimensions (mm)	1000 x 3000 x 3
Weight (kg/m ²)	7
Bending Radius (m) (For Kalesinterflex® 3mm Fit Product Group)	5.5 (concave)
Classification in accordance with EN 14411 ANNEXE G GROUP B Ia	

	Requirements	Kalesinterflex® Value	Standart of Test
Dimensions and Surface Quality			
Length & Width - The deviation in percent of the average size for each tile (2 or 4 sides) from the work size (W)	S>410 _ ± 0.6%	(+/-) 0.2%	ISO 10545-2
Thickness - The deviation in percent of the average thickness of each tile from the work size thickness.	S>410 _ ± 5%	(+/-) 2%	ISO 10545-2
Straightness of Sides (Facial Sides) - The max. deviation from straightness, in percent, related to the corresponding work size.	S>410 _ ± 0.5%	(+/-) 0.2%	ISO 10545-2
Rectangularity - The max. deviation from rectangularity, in percent, related to the corresponding work sizes.	S>410 _ ± 0.6%	(+/-) 0.2%	ISO 10545-2
Surface Flatness - The max. deviation from flatness, in percent; a) Center curvature, related to diagonal calculated from the work sizes; b) Edge curvature, related to corresponding work sizes; c) Warpage, related to diagonal calculated from the work sizes.	S>410 _ ± 0.5%	(+/-) 0.2%	ISO 10545-2
Surface Quality	A min. of 95% of the tiles shall be free from visible defects that would impair the appearance of a major area of tiles.	Affirmative	ISO 10545-2
Water Absorption (percent by mass)	< 0.5%	< 0.1%	ISO 10545-3
Modulus of Rupture (N/mm ²)	Minimum 35	Minimum 50	ISO 10545-4*
Abrasion Resistanve - Resistance to deep abrasion of unglazed tiles, removed volume in cubic millimeters.	Maximum 175 Report abrasion class and cycles passed	< 135	ISO 10545-6
Thermal Shock Resistance	Test Method Available	Affirmativa	ISO 10545-9
Frost Resistance	Required	Affirmativa	ISO 10545-12
Moisture Expansion, in mm/m	Test Kethod Available	0 %	ISO 10545-10
Resistance to Staining - Unglazed Tiles	Test Method Available	Min. Class 3	ISO 10545-14
Resistance to Chemicals			
Resistance to Low Concentrations of Acids and Alkalis - Unglazed Tiles	Required	ULA	ISO 10545-13
Resistance to high concentrations of acids and alkalis	Test Method Available	UHA	ISO 10545-13
Resistance to household chemicals and swimming pool salts - Unglazed Tiles	Minimum UB	UA	ISO 10545-13
Ramp Slip Resistance (oil / wet)	Where Required		DIN 51130/51097

Other Technical Classifications

Determination of Charpy Impact Properties (kJ/m ²) Weight (kg/m ²)		UNI EN ISO 179: 1998
Elasticity Module (N/mm ²) (Plain)	45000	UNI EN ISO 14125: 2000
Colour Resistance to Sunlight	Resistant	DIN 51094
Heat Conductivity Coefficient (W/mK)	1.2	TS 388 / 1977

